



电机丝杆直连型

Direct connection type of motor screw rod

贯通轴式丝杆步进电机

Through shaft type screw stepper motor

滚珠丝杆·滑动丝杆

Ball screw · Sliding screw



2相步进电机和轧制滚珠丝杆·滑动丝杆一体型产品，他的优势体现于结构紧凑、性价比高。
Rolled Ball Screws built in 2-phase Stepping Motor achieve compact unit & superior cost performance.

电机丝杆直连型 (滚珠丝杆/滑动丝杆)

Direct connection type of motor screw rod
(Ball screw / Sliding screw)



标准库存品

● 公称型号的构成 Model number notation

GSSD 20 - R 0601 K - 78 A - P M1 - D1 - E2000 - L5 - B - 001

1 2 3 4 5 6 7 8 9 10 11 12 13 14

1 系列符号

GSSD:电机丝杆直连型代号

2 电机规格尺寸 (mm)

可选20/28/35/42/57步进马达

3 丝杆类型

G: 精密滚珠丝杆 R: 冷轧滚珠丝杆

Re: 树脂滑动丝杆 GT: 精密冷轧滚珠丝杆

4 丝杆轴外径及导程

06: 丝杆轴外径 01: 丝杆导程

5 螺母类型

K: 螺母类型代号, 若无则省略

6 丝杆凸出长度

详见: 丝杆轴长度图

7 支撑端类型

可选A/B/C类型, 详见: 轴端形状图

8 马达出线方式

N: 直接出线 P: 接插件

9 马达类型

M1: 单叠 M2: 双叠

10 螺母方向

D1: 螺母法兰朝马达端

D2: 螺母法兰朝支撑端

11 编码器分辨率 (若无则省略)

12 编码器线长

L5: 标配5米线, 若无编码器则省略。

13 是否含刹车 (若无则省略)

14 图纸说明 - 客户特殊样式

1 series of symbols

GSSD: motor screw direct connection type code

2 specification and dimension of motor (mm)

optional 20 / 28 / 35 / 42 / 57 stepping motor

3 screw type

g: precision ball screw R: cold rolled ball screw

re: resin sliding screw GT: precision cold rolling ball screw

4 outer diameter and lead of screw shaft

06: outer diameter of screw shaft 01: screw lead

5 nut type

K: nut type code, if not omitted

6 protruding length of screw rod

for details, please refer to the drawing of screw shaft length

7 type of support end

optional A / B / C type, see shaft end shape drawing for details

8 motor outgoing mode

N: direct outlet P: connector

9 motor type

M1: single stack M2: double stack

10 nut direction

D1: the nut flange is facing the Mada end

D2: nut flange towards support end

11 encoder resolution (omitted if none)

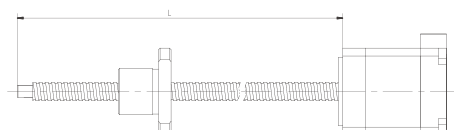
12 encoder wire length

L5: Standard 5m wire, if there is no encoder, it will be omitted.

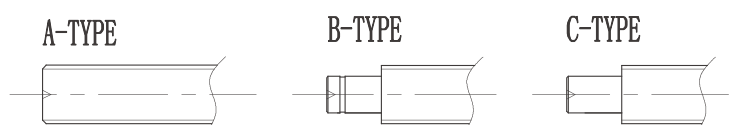
13 brake included (omitted if not)

14 drawing description - customer special style

● 丝杆轴长度 Screw shaft length



● 轴端形状 Shaft end shape



丝杆电机直连型特点

FEATURES OF SCREW MOTOR DIRECT CONNECTION

◆ 结构升级 传动简易 Transmission upgrade, simple structure

在滚珠丝杆的轴端直接安装2相步进电机，将滚珠丝杆轴心作为电机旋转轴心的理想结构。

A 2-phase stepping motor is directly installed on the shaft end of the ball screw, and the ball screw axis is used as the ideal structure of the motor rotation axis.

◆ 空间紧凑 小型轻量 Compact and compact

2相步进电机和轧制滚珠丝杆一体型产品，通过电机轴与滚珠丝杆轴的一体化，无需联轴器，节省了长边方向的尺寸。

Two-phase stepping motor and rolled ball screw integrated product, through the integration of the motor shaft and the ball screw shaft, no coupling is needed, saving the size of the long side direction.

◆ 高精度 高稳定性 优越的性价比 High precision, high stability, excellent cost performance

轧制滚珠丝杆与2相步进电机的组合，节省了联轴器，一体化结构减少组合精度误差，可使重复定位精度为 $\pm 0.001\text{mm}$ 。

The combination of rolling ball screw and 2-phase stepping motor saves the coupling, and the integrated structure reduces the combined accuracy error, and can make the repeated positioning accuracy $\pm 0.001\text{mm}$.

◆ 轴端多样性 可非标定制 Multiple shaft ends can be customized

提供多种轴端形状、行程规格，可根据客户的要求定制非标产品。

Provide a variety of shaft end shapes and stroke specifications, and non-standard products can be customized according to customer requirements.

◆ 产品丰富 规格齐全 Rich products, complete specifications

电机规格有20、28、35、42、57步进马达，可搭配滚珠丝杆、树脂滑动丝杆。

The motor specifications are 20, 28, 35, 42, 57 stepping motors, which can be matched with ball screws and resin sliding screws.

马达规格 Motor specifications

| Motor Frame Size 马达框架尺寸 | Motor Model 马达型号 | Rated Voltage 额定电压 (V) | Rated Current 额定电流 (A/相) | Winding Impedance 卷线阻抗 (Ω) | coefficient of Mutual Induction 感应系数 (mH) | Maximum Static Torque 最大静止扭矩 (N.m) | Motor specifications 马达规格 (mm) |
|----------------------------|---------------------|------------------------------|--------------------------------|---|---|--|--------------------------------------|
| 20 | 8E2004 | 3.52 | 0.4 | 8.8 | 2.8 | 0.003 | 20 |
| | 8E2105 | 2.55 | 0.5 | 5.1 | 1.5 | 0.0036 | 27.2 |
| 28 | 11E2110 | 2.1 | 1.0 | 2.1 | 1.5 | 0.036 | 33.35 |
| | 11E2216 | 2.4 | 1.6 | 1.5 | 1.36 | 0.052 | 45 |
| 35 | 14E2110 | 3.5 | 1.0 | 3.5 | 3.6 | 0.06 | 33.6 |
| | 14E2215 | 4.05 | 1.5 | 2.7 | 3.2 | 0.1 | 45.6 |
| 42 | 17E2115 | 2.8 | 1.5 | 1.85 | 2.2 | 0.18 | 34.1 |
| | 17E2225 | 2.25 | 2.5 | 0.9 | 1.8 | 0.32 | 48.1 |
| 57 | 23E2110 | 6.4 | 1.0 | 6.4 | 1.65 | 0.7 | 45 |
| | 23E2225 | 5.0 | 2.5 | 2.0 | 5.2 | 1.5 | 65 |

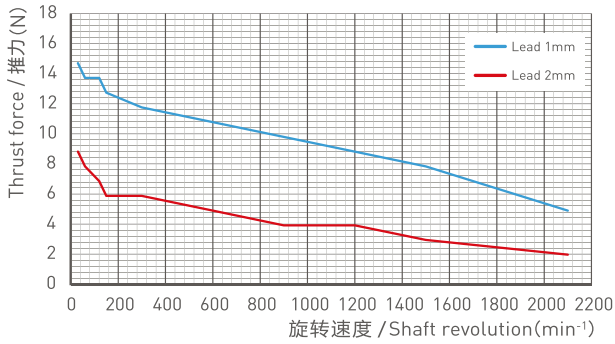
产品索引 Product index

| Motor specifications 马达规格 (mm) | Model 型号 | Total Length of Motor 马达全长 (mm) | Rated Current 额定电流 (A/相) | Maximum Static Torque 最大静止扭矩 (N.m) | Dia. 公称直径 (mm) | Lead 导程 (mm) | Reference Thrust 参考推力 (N) |
|-----------------------------------|------------------|------------------------------------|-----------------------------|---------------------------------------|-------------------|-----------------|------------------------------|
| 20 | GSSD20-R0401-M1 | 20 | 0.4 | 0.003 | 04 | 01 | 10 |
| | GSSD20-R0401-M2 | 27.2 | 0.5 | 0.0035 | 04 | 01 | 15 |
| | GSSD20-R0401K-M1 | 20 | 0.4 | 0.003 | 04 | 01 | 10 |
| | GSSD20-R0401K-M2 | 27.2 | 0.5 | 0.0035 | 04 | 01 | 15 |
| | GSSD20-R0402-M1 | 20 | 0.4 | 0.003 | 04 | 02 | 5 |
| | GSSD20-R0402-M2 | 27.2 | 0.5 | 0.0035 | 04 | 02 | 7 |
| 28 | GSSD28-R0504-M1 | 33.35 | 1.0 | 0.036 | 05 | 04 | 20 |
| | GSSD28-R0504-M2 | 45 | 1.6 | 0.052 | 05 | 04 | 40 |
| | GSSD28-R0504G-M1 | 33.35 | 1.0 | 0.036 | 05 | 04 | 20 |
| | GSSD28-R0504G-M2 | 45 | 1.6 | 0.052 | 05 | 04 | 40 |
| | GSSD28-R0601-M1 | 33.35 | 1.0 | 0.036 | 06 | 01 | 110 |
| | GSSD28-R0601-M2 | 45 | 1.6 | 0.052 | 06 | 01 | 150 |
| | GSSD28-R0601K-M1 | 33.35 | 1.0 | 0.036 | 06 | 01 | 110 |
| | GSSD28-R0601K-M2 | 45 | 1.6 | 0.052 | 06 | 01 | 150 |
| | GSSD28-R0602-M1 | 33.35 | 1.0 | 0.036 | 06 | 02 | 50 |
| | GSSD28-R0602-M2 | 45 | 1.6 | 0.052 | 06 | 02 | 12 |
| | GSSD28-R0602G-M1 | 33.35 | 1.0 | 0.036 | 06 | 02 | 50 |
| | GSSD28-R0602G-M2 | 45 | 1.6 | 0.052 | 06 | 02 | 150 |
| | GSSD28-R0606-M1 | 33.35 | 1.0 | 0.036 | 06 | 06 | 18 |
| | GSSD28-R0606-M2 | 45 | 1.6 | 0.052 | 06 | 06 | 35 |
| | GSSD28-R0610-M1 | 33.35 | 1.0 | 0.036 | 06 | 10 | 10 |
| | GSSD28-R0610-M2 | 45 | 1.6 | 0.052 | 06 | 10 | 15 |
| 35 | GSSD35-R0801-M1 | 33.6 | 1.0 | 0.06 | 08 | 01 | 175 |
| | GSSD35-R0801-M2 | 45.6 | 1.5 | 1.0 | 08 | 01 | 230 |
| | GSSD35-R0801K-M1 | 33.6 | 1.0 | 0.06 | 08 | 01 | 175 |
| | GSSD35-R0801K-M2 | 45.6 | 1.5 | 1.0 | 08 | 01 | 230 |
| | GSSD35-R0802-M1 | 33.6 | 1.0 | 0.06 | 08 | 02 | 85 |
| | GSSD35-R0802-M2 | 45.6 | 1.5 | 1.0 | 08 | 02 | 160 |
| | GSSD35-R0805-M1 | 33.6 | 1.0 | 0.06 | 08 | 05 | 35 |
| | GSSD35-R0805-M2 | 45.6 | 1.5 | 1.0 | 08 | 05 | 65 |
| | GSSD35-R0810-M1 | 33.6 | 1.0 | 0.06 | 08 | 10 | 15 |
| | GSSD35-R0810-M2 | 45.6 | 1.5 | 1.0 | 08 | 10 | 30 |
| 42 | GSSD42-R1002-M1 | 34.1 | 1.5 | 0.18 | 10 | 02 | 184 |
| | GSSD42-R1002-M2 | 48.1 | 2.5 | 0.32 | 10 | 02 | 306 |
| | GSSD42-R1002K-M1 | 34.1 | 1.5 | 0.18 | 10 | 02 | 184 |
| | GSSD42-R1002K-M2 | 48.1 | 2.5 | 0.32 | 10 | 02 | 306 |
| | GSSD42-R1005-M1 | 34.1 | 1.5 | 0.18 | 10 | 05 | 75 |
| | GSSD42-R1005-M2 | 48.1 | 2.5 | 0.32 | 10 | 05 | 15 |
| | GSSD42-R1010-M1 | 34.1 | 1.5 | 0.18 | 10 | 10 | 40 |
| | GSSD42-R1010-M2 | 48.1 | 2.5 | 0.32 | 10 | 10 | 83 |
| | GSSD42-R1015-M1 | 34.1 | 1.5 | 0.18 | 10 | 15 | 27 |
| | GSSD42-R1015-M2 | 48.1 | 2.5 | 0.32 | 10 | 15 | 50 |
| | GSSD42-R1020-M1 | 34.1 | 1.5 | 0.18 | 10 | 20 | 22 |
| | GSSD42-R1020-M2 | 48.1 | 2.5 | 0.32 | 10 | 20 | 41 |

◆ 推力-速度线图 Force-speed diagram

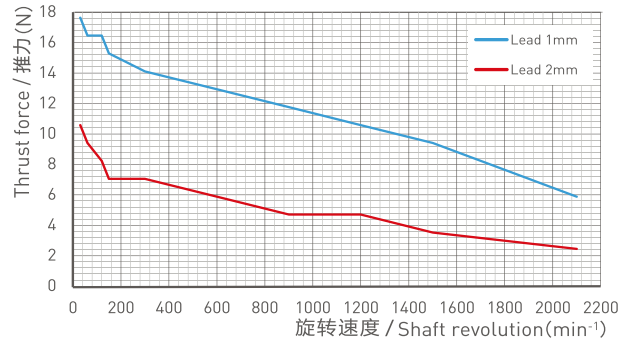
电机型号: 08E2004 (□20)

Motor model: 08E2004 (□20)



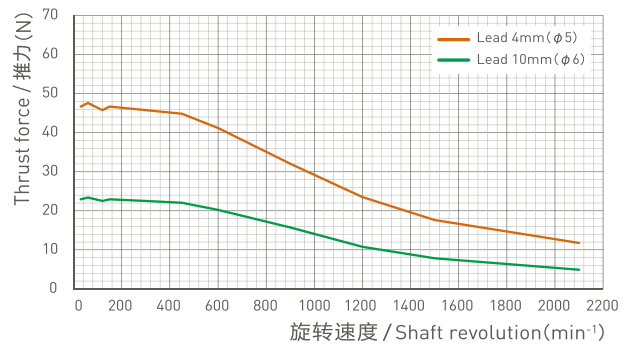
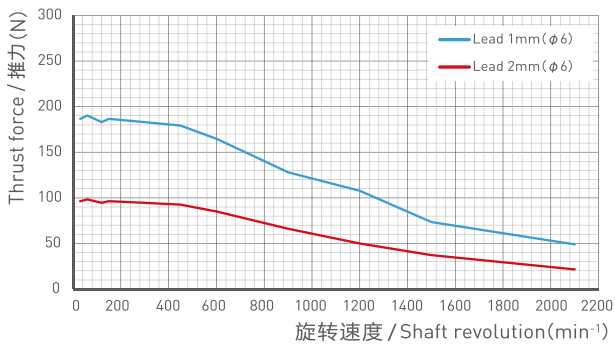
电机型号: 08E2105 (□20)

Motor model: 08E2105 (□20)



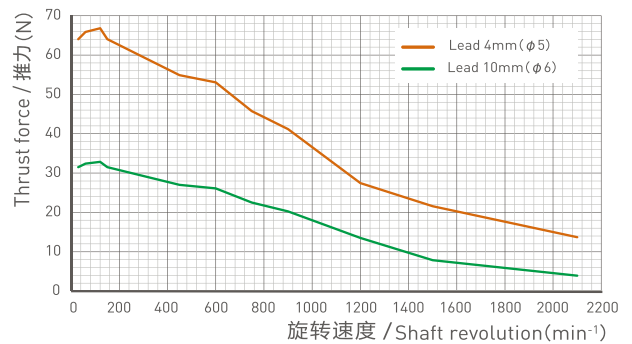
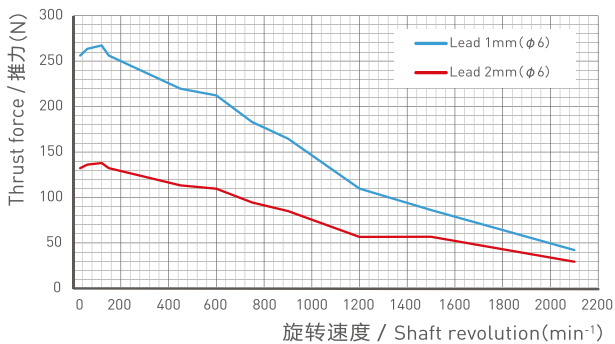
电机型号: 11E2110 (□28)

Motor model: 11E2110 (□28)



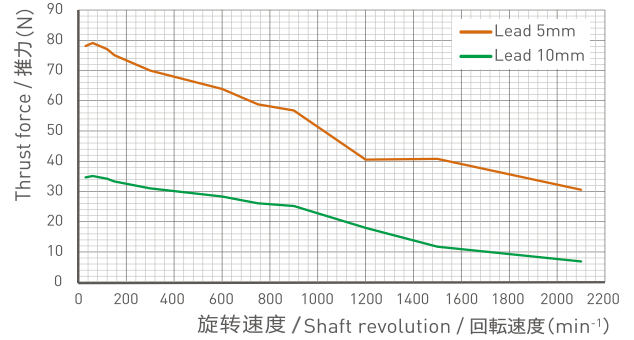
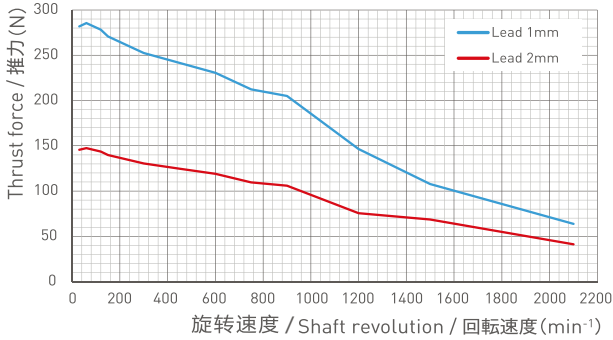
电机型号: 11E2216 (□28)

Motor model: 11E2216 (□28)



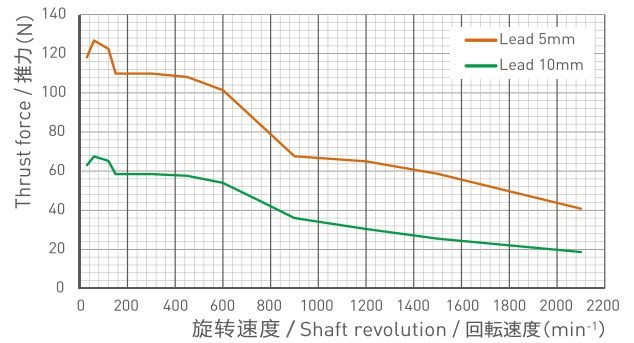
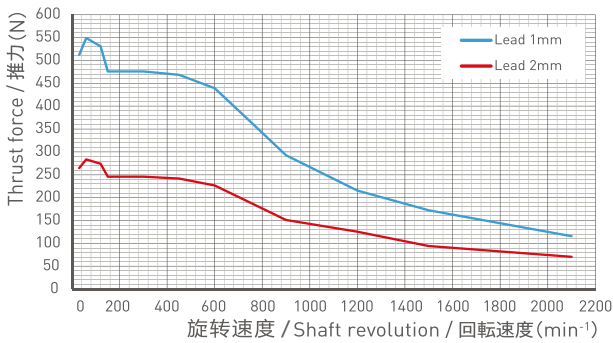
电机型号: 14E2110 (□35)

Motor model: 14E2110 (□35)



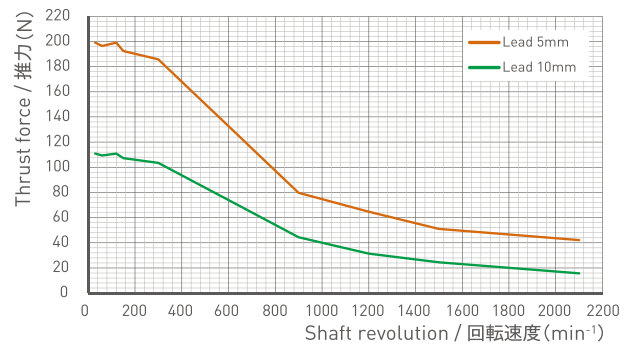
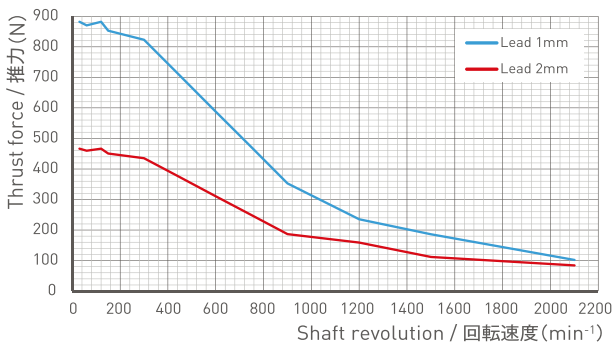
电机型号: 14E2215 (□35)

Motor model: 14E2215 (□35)



电机型号: 17E2115 (□42)

Motor model: 17E2115 (□42)

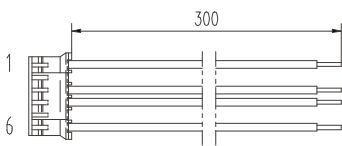
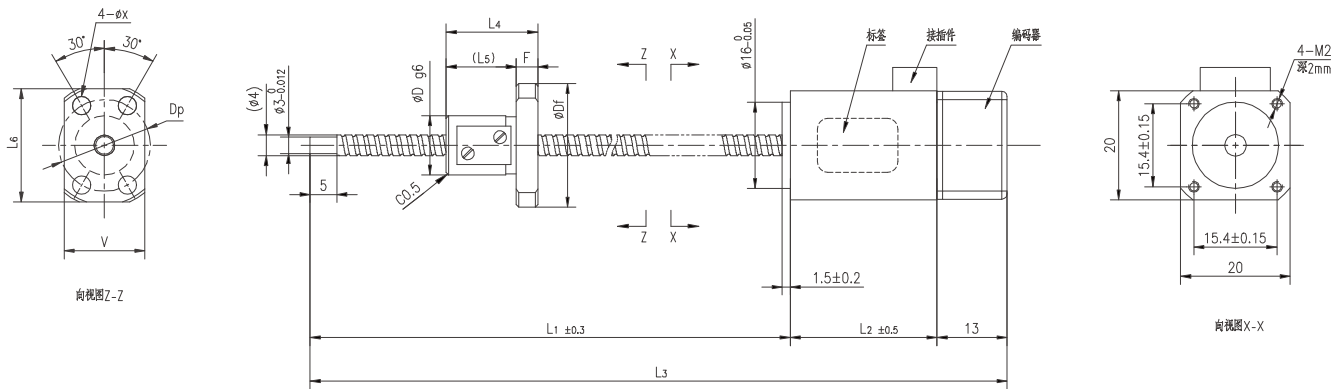


注: 推力-速度线圈是根据样品的实测值作成的。每个电机多少会有些变化, 仅作为参考。

Note) Force -speed diagrams above are measurement data of samples. It may vary depending on each motor's characteristic.
Please consider these diagrams as reference data.

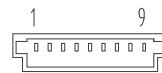
GSSD20-R

Shaft dia.(轴径) $\phi 4$



Housing: JST ZHR-6
Terminal: JST SZH-002T-P0.5S
Wire: AWG 28

| Pin No. | Colour 颜色 | Description 定义 |
|---------|----------------|----------------|
| 1 | Red 红 | A+ |
| 3 | Red/White 红白 | A- |
| 4 | Green 绿 | B+ |
| 6 | Green/White 绿白 | B- |



Housing: JST SHR-09V-S
Terminal: JST SSH-003T-P0.2-H
Wire: AWG 28

| Pin No. | 1 | 2 | 3 | 4 | 5 | 6 | 7 | 8 | 9 |
|----------------|-----|-----|-----|-----|----|----|----|-----|-----|
| Description 定义 | +5V | GND | EA+ | EA- | Z+ | Z- | PE | EB+ | EB- |

| Model 样式 | Lead 导程 | L2 | L3 | L4 | L5 | L6 | F | Df | D | X | Dp | V |
|-------------------|--------------------------------|------|---------|----|----|----|---|----|----|-----|----|----|
| GSSD20-R0401-PM1 | 01 | 20 | L1+33 | 17 | 13 | 21 | 4 | 23 | 11 | 3.4 | 17 | 15 |
| GSSD20-R0401-PM2 | 01 | 27.2 | L1+40.2 | 17 | 13 | 21 | 4 | 23 | 11 | 3.4 | 17 | 15 |
| GSSD20-R0401K-PM1 | 01 | 20 | L1+33 | 13 | 10 | - | 3 | 19 | 11 | 2.9 | 14 | 13 |
| GSSD20-R0401K-PM2 | 01 | 27.2 | L1+40.2 | 13 | 10 | - | 4 | 19 | 11 | 2.9 | 14 | 13 |
| GSSD20-R0402-PM2 | 02 | 20 | L1+33 | 19 | 15 | 21 | 4 | 23 | 11 | 3.4 | 17 | 15 |
| GSSD20-R0402-PM1 | 02 | 27.2 | L1+40.2 | 19 | 15 | 21 | 4 | 23 | 11 | 3.4 | 17 | 15 |
| L1以下尺寸为标准品 | 64 / 89 / 99 / 129 / 149 / 189 | | | | | | | | | | | |

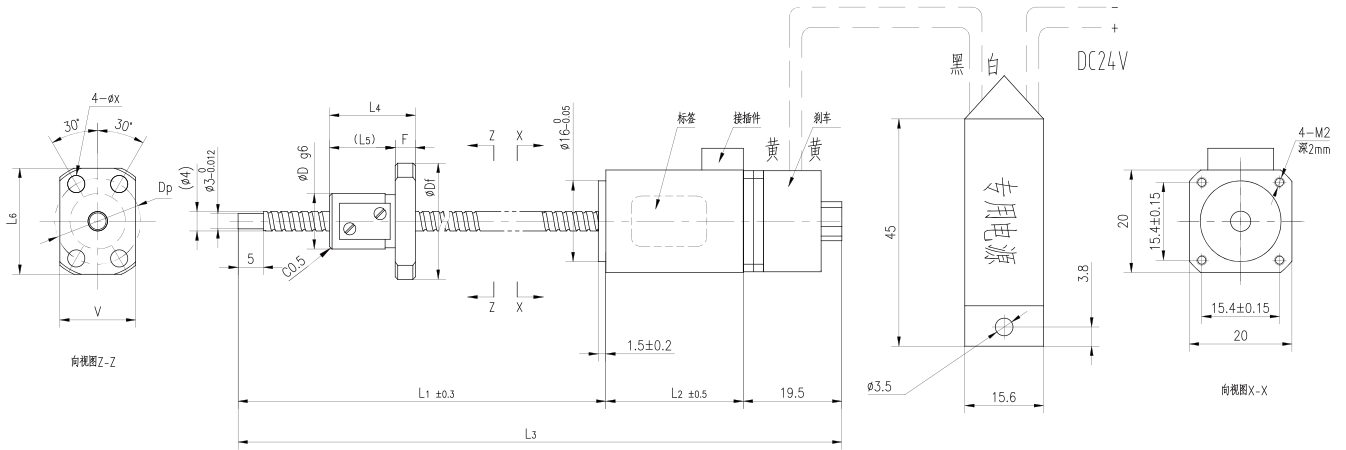
| Ball Screw Specifications 主要技术参数 | |
|----------------------------------|---|
| Motor model 马达类型 | 08E2004 08E2105 |
| Motor code 马达代号 | PM1 PM2 |
| Step angel 步距角 | 1.8° |
| Rated voltage 额定电压 | 3.52V 2.55V |
| Rated current 额定电流 | 0.4A 0.5A |
| Resistance/phase 相阻抗 | 2.8Ω 5.1Ω |
| Inductance/phase 相电感 | 2.8mH 1.5mH |
| Holding torque 静止扭矩 | 0.003N.M 0.0036N.M |
| Rotor inertia 转子惯量 | 2.4g.cm ² 2.6g.cm ² |
| Motor weight 马达重量 | 60g 80g |
| Encoder resolution 编码器分辨率 | 2000CPR |
| Operating temperature 适用温度范围 | -10°C~50°C |

| Ball Screw Specifications 主要技术参数 | |
|----------------------------------|----------------------|
| Accuracy grade 精度等级 | Ct7 |
| Thread direction 螺纹方向 | Right 右旋 |
| Axial play 轴向间隙 | Max 0.02mm |
| Surface hardness 螺纹部表面硬度 | Thread area HRC58~62 |
| Anti-rust treatment 防锈处理 | Anti-rust oil 防锈油 |
| Repeatability 重复精度 (参考) | ±0.02mm |

可选配马达样式

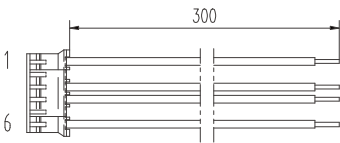
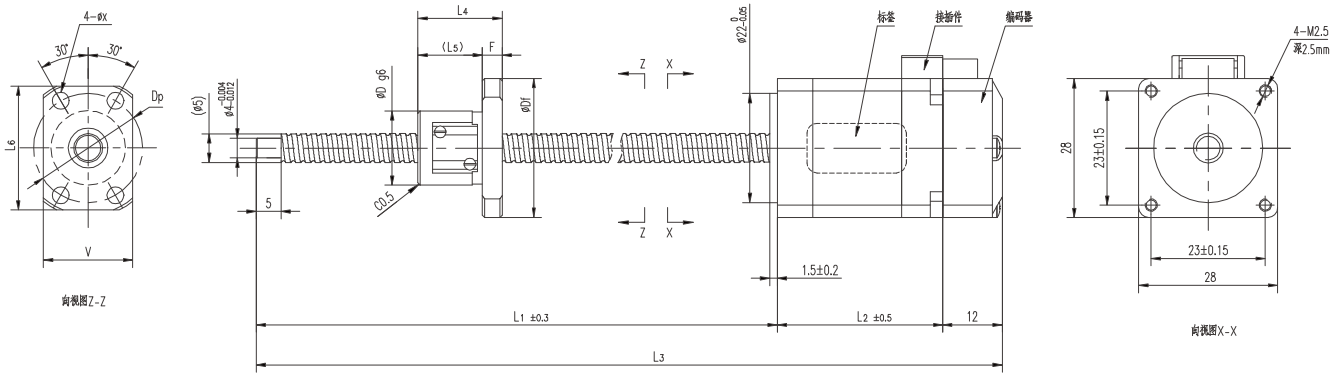
OPTIONAL MOTOR STYLE

● 马达带刹车 Motor with brake



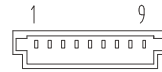
GSSD28

Shaft dia.(轴径) $\phi 5$



Housing: JST ZHR-6
Terminal: JST SZH-002T-P0.5S
Wire: AWG 28

| Pin No. | Colour 颜色 | Description 定义 |
|---------|----------------|----------------|
| 1 | Red 红 | A+ |
| 3 | Red/White 红白 | A- |
| 4 | Green 绿 | B+ |
| 6 | Green/White 绿白 | B- |



Housing: JST SHR-09V-S
Terminal: JST SSH-003T-P0.2-H
Wire: AWG 28

| Pin No. | 1 | 2 | 3 | 4 | 5 | 6 | 7 | 8 | 9 |
|----------------|-----|-----|-----|-----|----|----|----|-----|-----|
| Description 定义 | +5V | GND | EA+ | EA- | Z+ | Z- | PE | EB+ | EB- |

| Model 样式 | Lead 导程 | L2 | L3 | L4 | L5 | L6 | F | Df | D | X | Dp | V |
|-------------------|---------|-------|----------|----|----|------|---|----|----|-----|----|----|
| GSSD28-R0504-PM1 | 04 | 33.35 | L1+45.35 | 22 | 18 | 21.5 | 4 | 24 | 12 | 3.4 | 18 | 15 |
| GSSD28-R0504-PM2 | 04 | 45 | L1+57 | 22 | 18 | 21.5 | 4 | 24 | 12 | 3.4 | 18 | 15 |
| GSSD28-R0504G-PM1 | 04 | 33.35 | L1+45.35 | 22 | 18 | - | 4 | 24 | 12 | 3.4 | 18 | 14 |
| GSSD28-R0504G-PM2 | 04 | 45 | L1+57 | 22 | 18 | - | 4 | 24 | 12 | 3.4 | 18 | 14 |

L1以下尺寸为标准品 85 / 105 / 145 / 185 / 225 / 265

备注: G型螺母为2- ϕx

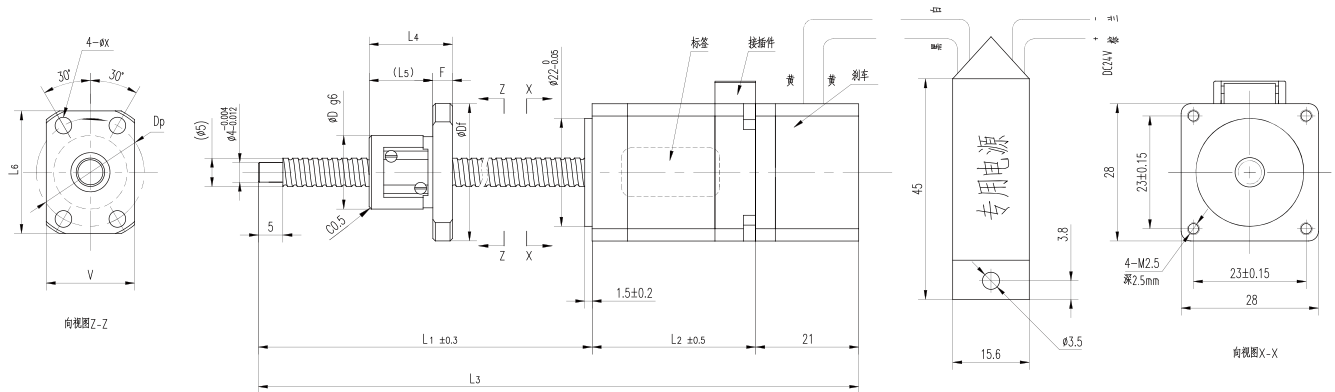
| Ball Screw Specifications 主要技术参数 | |
|----------------------------------|--|
| Motor model 马达类型 | 11E2110 11E2216 |
| Motor code 马达代号 | PM1 PM2 |
| Step angle 步距角 | 1.8° |
| Rated voltage 额定电压 | 2.1V 2.4V |
| Rated current 额定电流 | 1A 1.6A |
| Resistance/phase 相阻抗 | 2.1 Ω 1.5 Ω |
| Inductance/phase 相电感 | 1.5mH 1.36mH |
| Holding torque 静止扭矩 | 0.036N.M 0.052N.M |
| Rotor inertia 转子惯量 | 7.2g.cm ² 12g.cm ² |
| Motor weight 马达重量 | 180g 200g |
| Encoder resolution 编码器分辨率 | 2000CPR |
| Operating temperature 适用温度范围 | -10°C~50°C |

| Ball Screw Specifications 主要技术参数 | |
|----------------------------------|----------------------|
| Accuracy grade 精度等级 | Ct7 |
| Thread direction 螺纹方向 | Right 右旋 |
| Axial play 轴向间隙 | Max 0.02mm |
| Surface hardness 螺纹部表面硬度 | Thread area HRC58~62 |
| Anti-rust treatment 防锈处理 | Anti-rust oil 防锈油 |
| Repeatability 重复精度 (参考) | ± 0.02 mm |

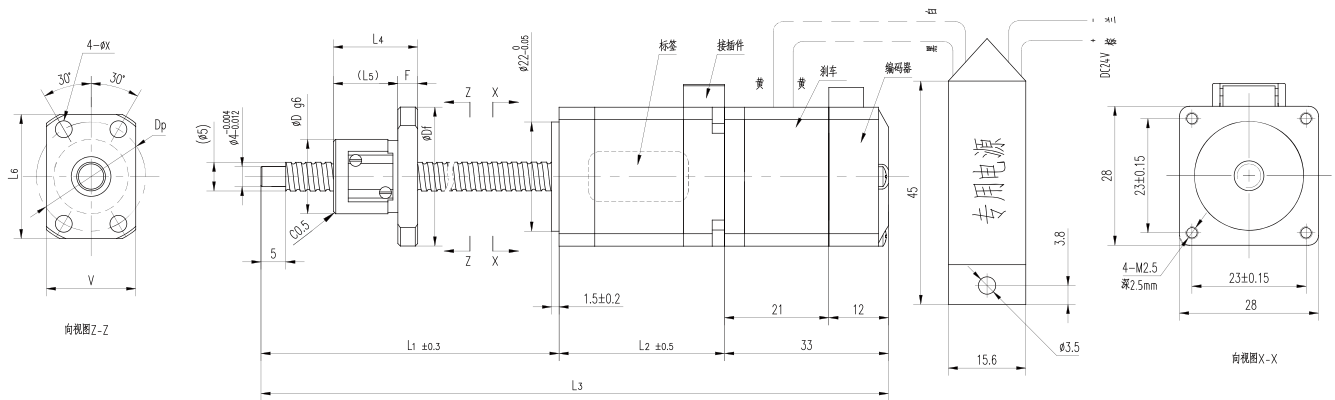
可选配马达样式

OPTIONAL MOTOR STYLE

● 马达带刹车 Motor with brake

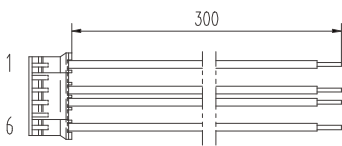
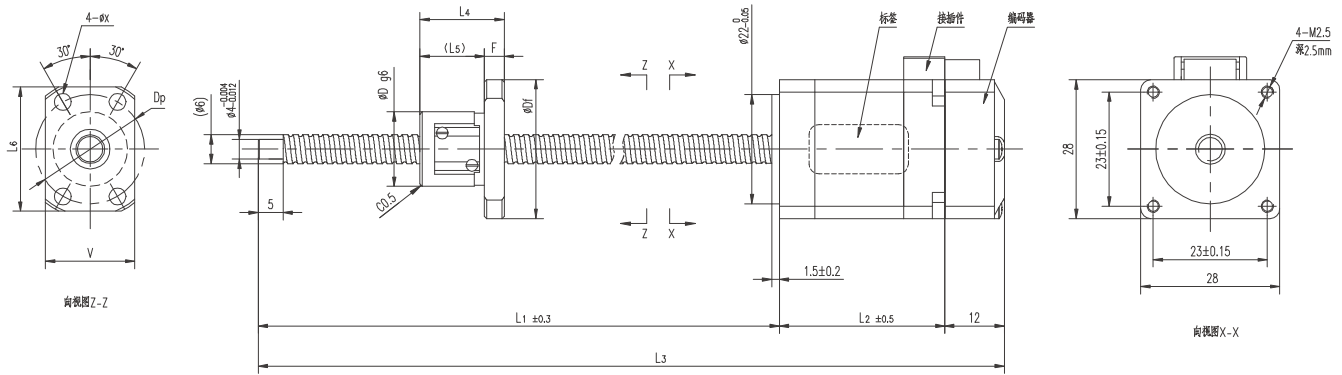


● 马达带编码器带刹车 Motor with encoder and brake



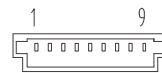
GSSD28-R

Shaft dia.(轴径) $\phi 6$



Housing: JST ZHR-6
Terminal: JST SZH-002T-P0.5S
Wire: AWG 28

| Pin No. | Colour 颜色 | Description 定义 |
|---------|----------------|----------------|
| 1 | Red 红 | A+ |
| 3 | Red/White 红白 | A- |
| 4 | Green 绿 | B+ |
| 6 | Green/White 绿白 | B- |



Housing: JST SHR-09V-S
Terminal: JST SSH-003T-P0.2-H
Wire: AWG 28

| Pin No. | 1 | 2 | 3 | 4 | 5 | 6 | 7 | 8 | 9 |
|----------------|-----|-----|-----|-----|----|----|----|-----|-----|
| Description 定义 | +5V | GND | EA+ | EA- | Z+ | Z- | PE | EB+ | EB- |

| Model 样式 | Lead 导程 | L2 | L3 | L4 | L5 | L6 | F | Df | D | X | Dp | V |
|-------------------|---------|-------|----------|------|------|------|-----|----|----|-----|----|----|
| GSSD28-R0601-PM1 | 01 | 33.35 | L1+45.35 | 17 | 13 | 23.5 | 4 | 26 | 13 | 3.4 | 20 | 16 |
| GSSD28-R0601-PM2 | 01 | 45 | L1+57 | 17 | 13 | 23.5 | 4 | 26 | 13 | 3.4 | 20 | 16 |
| GSSD28-R0601K-PM1 | 01 | 33.35 | L1+45.35 | 14.5 | 11 | 21 | 3.5 | 23 | 11 | 3.4 | 17 | 14 |
| GSSD28-R0601K-PM2 | 01 | 45 | L1+57 | 14.5 | 11 | 21 | 3.5 | 23 | 11 | 3.4 | 17 | 14 |
| GSSD28-R0602-PM1 | 02 | 33.35 | L1+45.35 | 17 | 13 | 25 | 4 | 28 | 15 | 3.4 | 22 | 18 |
| GSSD28-R0602-PM2 | 02 | 45 | L1+57 | 17 | 13 | 25 | 4 | 28 | 15 | 3.4 | 22 | 18 |
| GSSD28-R0602G-PM1 | 02 | 33.35 | L1+45.35 | 17 | 13 | - | 4 | 29 | 15 | 3.4 | 23 | 17 |
| GSSD28-R0602G-PM2 | 02 | 45 | L1+57 | 17 | 13 | - | 4 | 29 | 15 | 3.4 | 23 | 17 |
| GSSD28-R0606-PM1 | 06 | 33.35 | L1+45.35 | 17 | 8 | - | 4 | 27 | 14 | 3.4 | 21 | 16 |
| GSSD28-R0606-PM2 | 06 | 45 | L1+57 | 17 | 8 | - | 4 | 27 | 14 | 3.4 | 21 | 16 |
| GSSD28-R0610-PM1 | 10 | 33.35 | L1+45.35 | 23 | 11.5 | - | 4 | 27 | 14 | 3.4 | 21 | 16 |
| GSSD28-R0610-PM2 | 10 | 45 | L1+57 | 23 | 11.5 | - | 4 | 27 | 14 | 3.4 | 21 | 16 |

L1以下尺寸为标准品 85 / 105 / 145 / 185 / 225 / 265

备注: G型螺母为2- ϕx

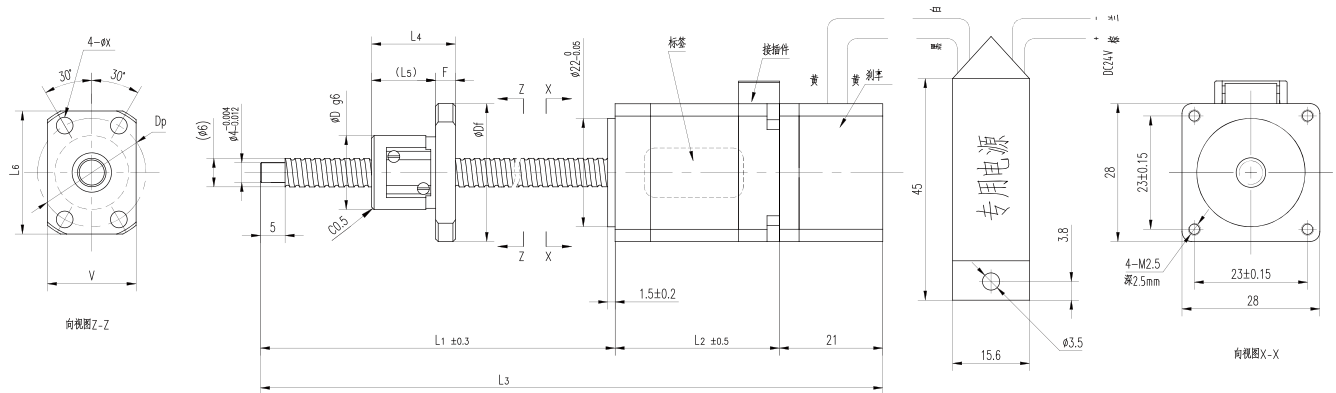
| Ball Screw Specifications 主要技术参数 | |
|----------------------------------|----------------------|
| Accuracy grade 精度等级 | Ct7 |
| Thread direction 螺纹方向 | Right 右旋 |
| Axial play 轴向间隙 | Max 0.02mm |
| Surface hardness 螺纹部表面硬度 | Thread area HRC58~62 |
| Anti-rust treatment 防锈处理 | Anti-rust oil 防锈油 |
| Repeatability 重复精度 (参考) | $\pm 0.02\text{mm}$ |

| Ball Screw Specifications 主要技术参数 | | |
|----------------------------------|----------------------|---------------------|
| Motor model 马达类型 | 11E2110 | 11E2216 |
| Motor code 马达代号 | PM1 | PM2 |
| Step angel 步距角 | 1.8° | |
| Rated voltage 额定电压 | 2.1V | 2.4V |
| Rated current 额定电流 | 1A | 1.6A |
| Resistance/phase 相阻抗 | 2.1 Ω | 1.5 Ω |
| Inductance/phase 相电感 | 1.5mH | 1.36mH |
| Holding torque 静止扭矩 | 0.036N.M | 0.052N.M |
| Rotor inertia 转子惯量 | 7.2g.cm ² | 12g.cm ² |
| Motor weight 马达重量 | 180g | 200g |
| Encoder resolution 编码器分辨率 | 2000CPR | |
| Operating temperature 适用温度范围 | -10°C~50°C | |

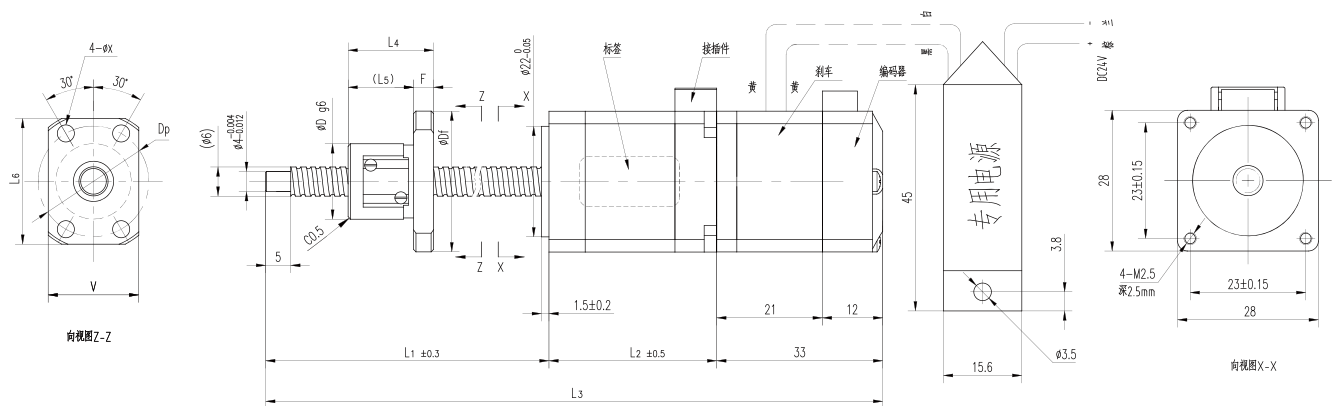
可选配马达样式

OPTIONAL MOTOR STYLE

● 马达带刹车 Motor with brake

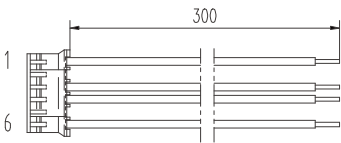
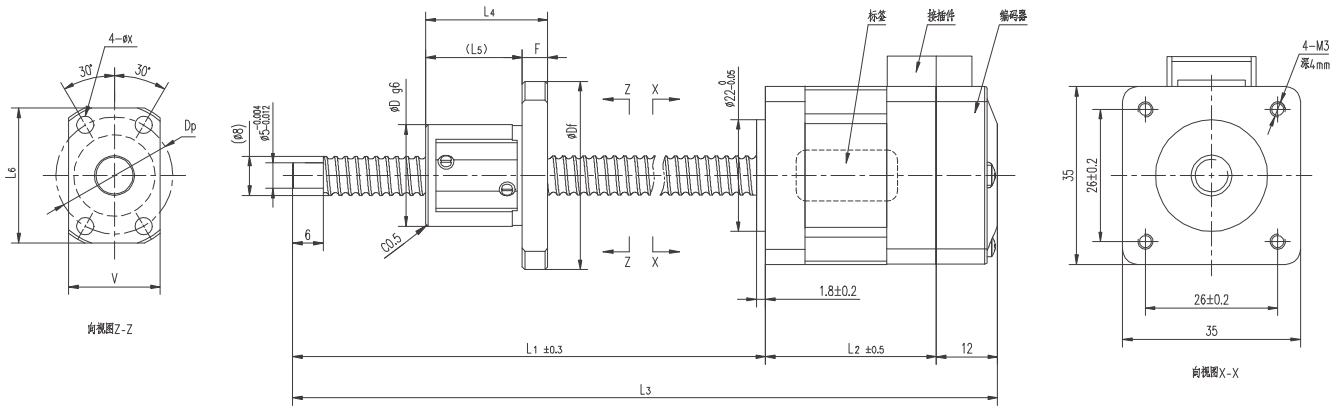


● 马达带编码器带刹车 Motor with encoder and brake



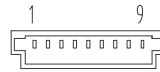
GSSD35-R

Shaft dia.(轴径) $\phi 8$



Housing: JST PHR-6
Terminal: JST SPH-002T-P0.5S
Wire: AWG 26

| Pin No. | Colour 颜色 | Description 定义 |
|---------|-----------|----------------|
| 1 | Black 黑 | A+ |
| 3 | Green 绿 | A- |
| 4 | Red 红 | B+ |
| 6 | Blue 蓝 | B- |



Housing: JST SHR-09V-S
Terminal: JST SSH-003T-P0.2-H
Wire: AWG 28

| Pin No. | 1 | 2 | 3 | 4 | 5 | 6 | 7 | 8 | 9 |
|----------------|-----|-----|-----|-----|----|----|----|-----|-----|
| Description 定义 | +5V | GND | EA+ | EA- | Z+ | Z- | PE | EB+ | EB- |

| Model 样式 | Lead 导程 | L2 | L3 | L4 | L5 | L6 | F | Df | D | X | Dp | V |
|-------------------|---------|------|---------|----|----|------|---|----|----|-----|----|----|
| GSSD35-R0801-PM1 | 01 | 33.6 | L1+45.6 | 17 | 13 | 26.5 | 4 | 29 | 16 | 3.4 | 23 | 18 |
| GSSD35-R0801-PM2 | 01 | 45.6 | L1+57.6 | 17 | 13 | 26.5 | 4 | 29 | 16 | 3.4 | 23 | 18 |
| GSSD35-R0801K-PM1 | 01 | 33.6 | L1+45.6 | 15 | 11 | 24 | 4 | 26 | 13 | 3.4 | 20 | 17 |
| GSSD35-R0801K-PM2 | 01 | 45.6 | L1+57.6 | 15 | 11 | 24 | 4 | 26 | 13 | 3.4 | 20 | 17 |
| GSSD35-R0802-PM1 | 02 | 33.6 | L1+45.6 | 24 | 19 | - | 5 | 37 | 20 | 3.4 | 29 | 22 |
| GSSD35-R0802-PM2 | 02 | 45.6 | L1+57.6 | 24 | 19 | - | 5 | 37 | 20 | 3.4 | 29 | 22 |
| GSSD35-R0805-PM1 | 05 | 33.6 | L1+45.6 | 28 | 24 | - | 4 | 31 | 18 | 3.4 | 25 | 20 |
| GSSD35-R0805-PM2 | 05 | 45.6 | L1+57.6 | 28 | 24 | - | 4 | 31 | 18 | 3.4 | 25 | 20 |
| GSSD35-R0808-PM1 | 08 | 33.6 | L1+45.6 | 20 | 10 | - | 4 | 31 | 18 | 3.4 | 25 | 20 |
| GSSD35-R0808-PM2 | 08 | 45.6 | L1+57.6 | 20 | 10 | - | 4 | 31 | 18 | 3.4 | 25 | 20 |
| GSSD35-R0810-PM1 | 10 | 33.6 | L1+45.6 | 24 | 13 | - | 4 | 31 | 18 | 3.4 | 25 | 20 |
| GSSD35-R0810-PM2 | 10 | 45.6 | L1+57.6 | 24 | 13 | - | 4 | 31 | 18 | 3.4 | 25 | 20 |

L1以下尺寸为标准品 98 / 123 / 148 / 173 / 198 / 223 / 248 / 273 / 323

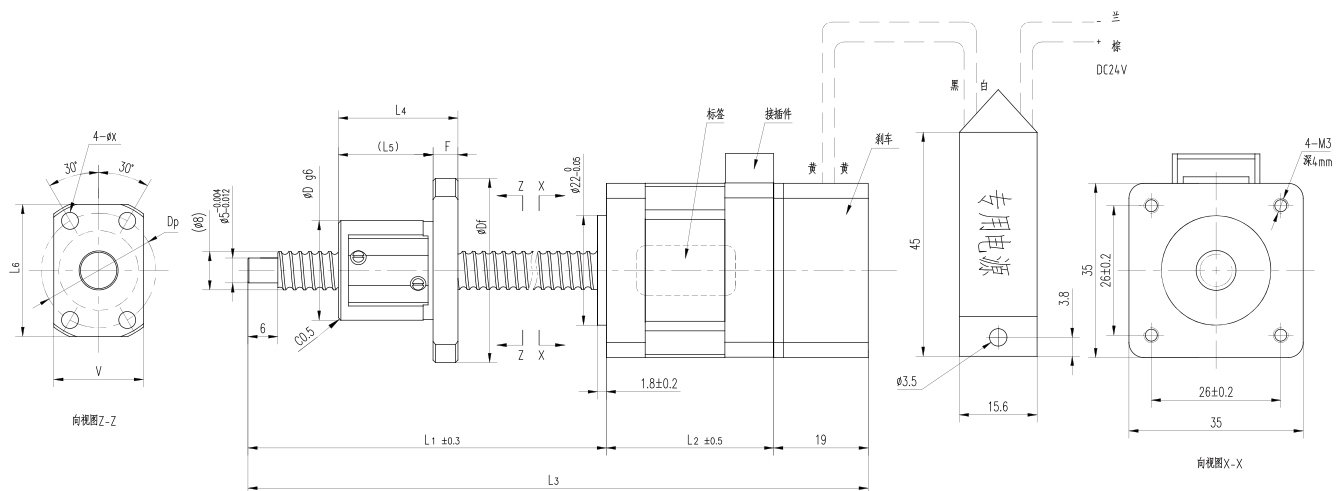
| Ball Screw Specifications 主要技术参数 | |
|----------------------------------|---|
| Motor model 马达类型 | 14E2110 14E2215 |
| Motor code 马达代号 | PM1 PM2 |
| Step angle 步距角 | 1.8° |
| Rated voltage 额定电压 | 3.5V 4.05V |
| Rated current 额定电流 | 1A 1.5A |
| Resistance/phase 相阻抗 | 3.5Ω 2.7Ω |
| Inductance/phase 相电感 | 3.6mH 3.2mH |
| Holding torque 静止扭矩 | 0.06N.M 0.1N.M |
| Rotor inertia 转子惯量 | 21g.cm ² 32g.cm ² |
| Motor weight 马达重量 | 200g 250g |
| Encoder resolution 编码器分辨率 | 2000CPR |
| Operating temperature 适用温度范围 | -10°C~50°C |

| Ball Screw Specifications 主要技术参数 | |
|----------------------------------|----------------------|
| Accuracy grade 精度等级 | Ct7 |
| Thread direction 螺纹方向 | Right 右旋 |
| Axial play 轴向间隙 | Max 0.02mm |
| Surface hardness 螺纹部表面硬度 | Thread area HRC58~62 |
| Anti-rust treatment 防锈处理 | Anti-rust oil 防锈油 |
| Repeatability 重复精度 (参考) | ±0.02mm |

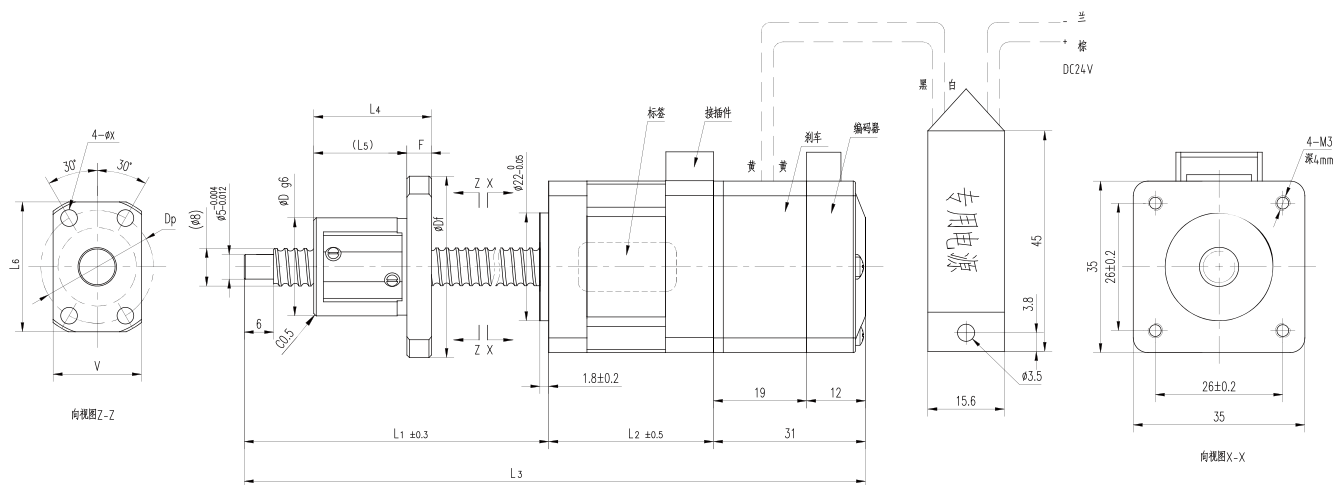
可选配马达样式

OPTIONAL MOTOR STYLE

● 马达带刹车 Motor with brake

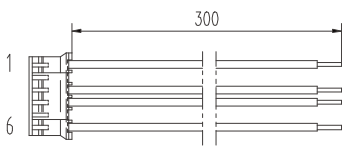
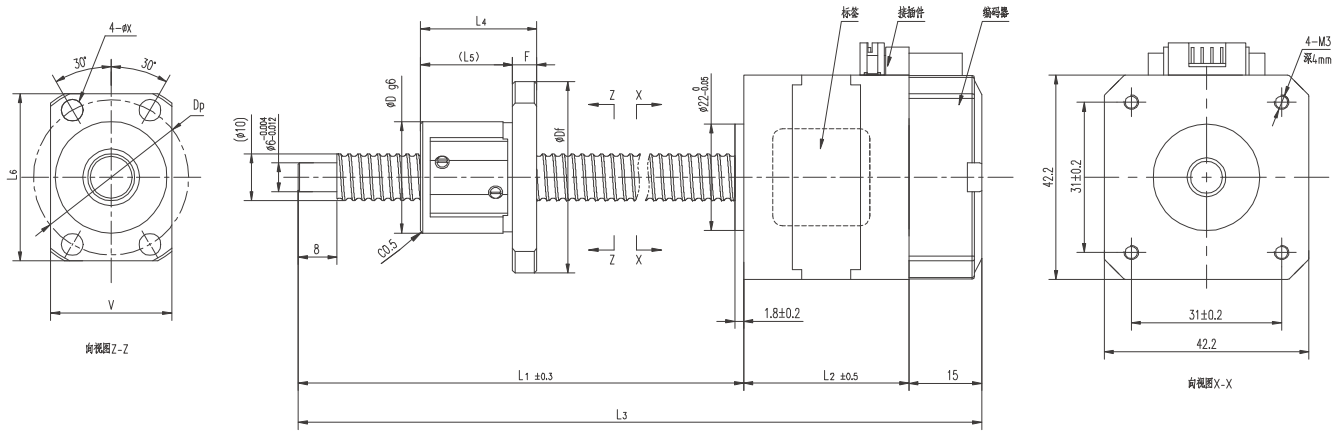


● 马达带编码器带刹车 Motor with encoder and brake



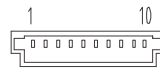
GSSD42-R

Shaft dia.(轴径) $\phi 10$



Housing: JST PHR-6
Terminal: JST SHP-002T-P0.5S
Wire: AWG 26

| Pin No. | Colour 颜色 | Description 定义 |
|---------|-----------|----------------|
| 1 | Black 黑 | A+ |
| 3 | Green 绿 | A- |
| 4 | Red 红 | B+ |
| 6 | Blue 蓝 | B- |



Housing: JST GHR-10V-S
Terminal: JST SSSL-002T-P0.2
Wire: AWG 26

| Pin No. | 1 | 2 | 3 | 4 | 5 | 6 | 7 | 8 | 9 | 10 |
|----------------|-----|-----|-----|-----|-----|----|----|-----|-----|----|
| Description 定义 | +PE | EA- | EA+ | EB- | EB+ | Z- | Z+ | GND | VCC | PE |

| Model 样式 | Lead 导程 | L2 | L3 | L4 | L5 | L6 | F | Df | D | X | Dp | V |
|-------------------|---------|------|---------|----|----|----|---|------|----|-----|----|----|
| GSSD42-R1002-PM1 | 02 | 34.1 | L1+49.1 | 24 | 19 | - | 5 | 39.5 | 23 | 4.5 | 32 | 25 |
| GSSD42-R1002-PM2 | 02 | 48.1 | L1+63.1 | 24 | 19 | - | 5 | 39.5 | 23 | 4.5 | 32 | 25 |
| GSSD42-R1002K-PM1 | 02 | 34.1 | L1+49.1 | 19 | 14 | 31 | 5 | 34 | 17 | 4.5 | 26 | 21 |
| GSSD42-R1002K-PM2 | 02 | 48.1 | L1+63.1 | 19 | 14 | 31 | 5 | 34 | 17 | 4.5 | 26 | 21 |
| GSSD42-R1005-PM1 | 05 | 34.1 | L1+49.1 | 26 | 21 | - | 5 | 40 | 23 | 4.5 | 32 | 25 |
| GSSD42-R1005-PM2 | 05 | 48.1 | L1+63.1 | 26 | 21 | - | 5 | 40 | 23 | 4.5 | 32 | 25 |
| GSSD42-R1010-PM1 | 10 | 34.1 | L1+49.1 | 24 | 13 | - | 5 | 40 | 23 | 4.5 | 32 | 25 |
| GSSD42-R1010-PM2 | 10 | 48.1 | L1+63.1 | 24 | 13 | - | 5 | 40 | 23 | 4.5 | 32 | 25 |
| GSSD42-R1015-PM1 | 15 | 34.1 | L1+49.1 | 33 | 22 | - | 5 | 40 | 23 | 4.5 | 32 | 25 |
| GSSD42-R1015-PM2 | 15 | 48.1 | L1+63.1 | 33 | 22 | - | 5 | 40 | 23 | 4.5 | 32 | 25 |
| GSSD42-R1020-PM1 | 20 | 34.1 | L1+49.1 | 23 | 13 | - | 5 | 37 | 20 | 4.5 | 29 | 22 |
| GSSD42-R1020-PM2 | 20 | 48.1 | L1+63.1 | 23 | 13 | - | 5 | 37 | 20 | 4.5 | 29 | 22 |

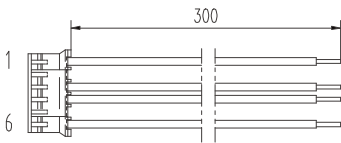
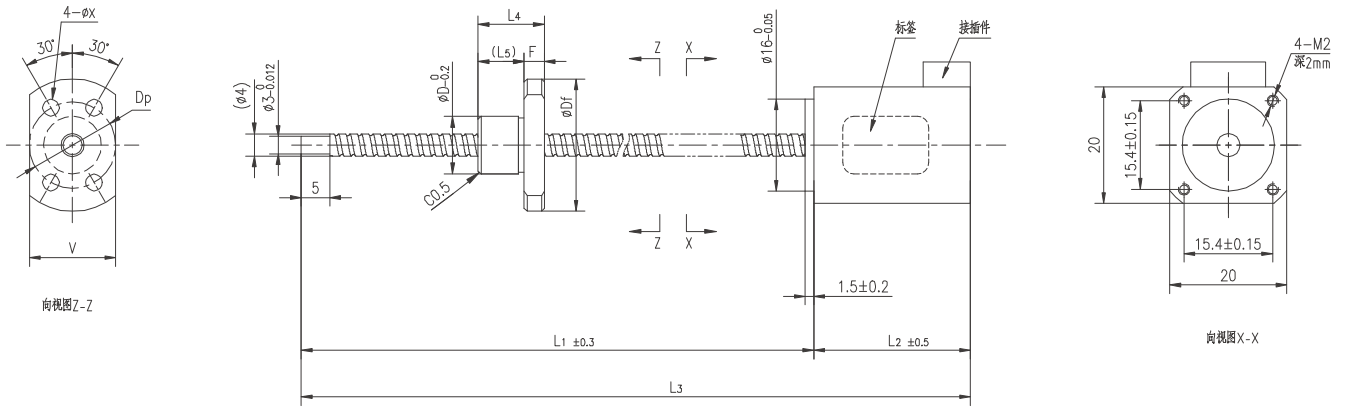
L1以下尺寸为标准品 152 / 202 / 252 / 202 / 352

| Ball Screw Specifications | 主要技术参数 | |
|------------------------------|---------------------|---------------------|
| Motor model 马达类型 | 17E2115 | 17E2225 |
| Motor code 马达代号 | PM1 | PM2 |
| Step angle 步距角 | 1.8° | |
| Rated voltage 额定电压 | 2.8V | 2.25V |
| Rated current 额定电流 | 1.5A | 2.5A |
| Resistance/phase 相阻抗 | 1.85Ω | 0.9Ω |
| Inductance/phase 相电感 | 2.2mH | 1.8mH |
| Holding torque 静止扭矩 | 0.18N.M | 0.32N.M |
| Rotor inertia 转子惯量 | 36g.cm ² | 58g.cm ² |
| Motor weight 马达重量 | 280g | 380g |
| Encoder resolution 编码器分辨率 | 5000CPR | |
| Operating temperature 适用温度范围 | -10°C~50°C | |

| Ball Screw Specifications | 主要技术参数 |
|---------------------------|----------------------|
| Accuracy grade 精度等级 | Ct7 |
| Thread direction 螺纹方向 | Right 右旋 |
| Axial play 轴向间隙 | Max 0.02mm |
| Surface hardness 螺纹部表面硬度 | Thread area HRC58~62 |
| Anti-rust treatment 防锈处理 | Anti-rust oil 防锈油 |
| Repeatability 重复精度 (参考) | ±0.02mm |

GSSD20-Re

Shaft dia.(轴径) $\phi 4$



Housing: JST ZHR-6
Terminal: JST SZH-002T-P0.5S
Wire: AWG 28

| Pin No. | Colour 颜色 | Description 定义 |
|---------|----------------|-------------------|
| 1 | Red 红 | A+ |
| 3 | Red/White 红白 | A- |
| 4 | Green 绿 | B+ |
| 6 | Green/White 绿白 | B- |

| Model 样式 | Lead 导程 | L2 | L3 | L4 | L5 | F | Df | D | X | Dp | V |
|-------------------|------------|------|---------|------|----|-----|----|----|-----|----|----|
| GSSD20-Re0401-PM1 | 01 | 20 | L1+20 | 11.5 | 8 | 3.5 | 23 | 10 | 2.9 | 15 | 15 |
| GSSD20-Re0401-PM2 | 01 | 27.2 | L1+27.2 | 11.5 | 8 | 3.5 | 23 | 10 | 2.9 | 15 | 15 |
| GSSD20-Re0402-PM1 | 02 | 20 | L1+20 | 11.5 | 8 | 3.5 | 23 | 10 | 2.9 | 15 | 15 |
| GSSD20-Re0402-PM2 | 02 | 27.2 | L1+27.2 | 11.5 | 8 | 3.5 | 23 | 10 | 2.9 | 15 | 15 |

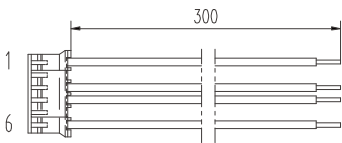
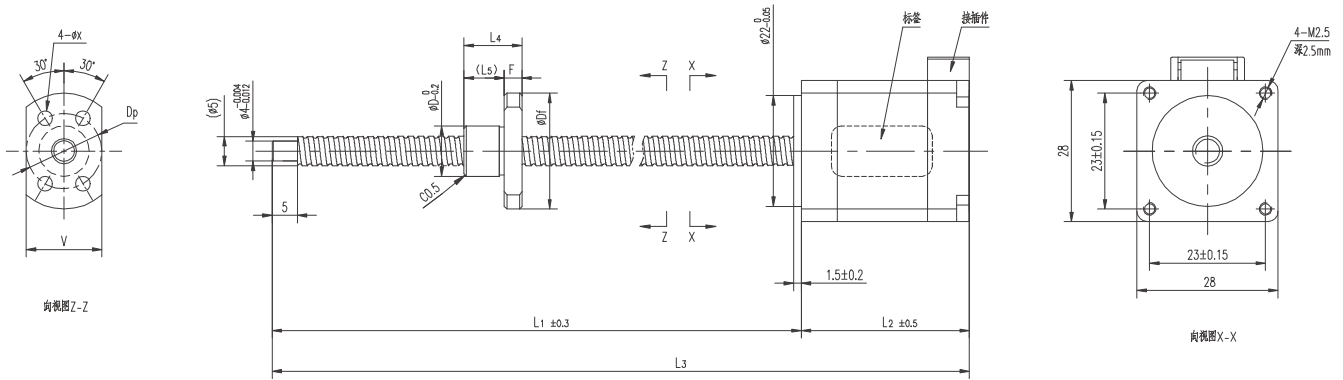
L1以下尺寸为标准品 64 / 89 / 99 / 129 / 149 / 189

| Ball Screw Specifications 主要技术参数 | |
|----------------------------------|------------|
| Accuracy grade 精度等级 | Ct7 |
| Thread direction 螺纹方向 | Right 右旋 |
| Axial play 轴向间隙 | Max 0.07mm |
| Repeatability 重复精度 (参考) | ±0.05mm |

| Sliding Specifications 主要技术参数 | | |
|-------------------------------|----------------------|----------------------|
| Motor model 马达类型 | 08E2004 | 08E2105 |
| Motor code 马达代号 | PM1 | PM2 |
| Step angel 步距角 | 1.8° | |
| Rated voltage 额定电压 | 3.52V | 2.55V |
| Rated current 额定电流 | 0.4A | 0.5A |
| Resistance/phase 相阻抗 | 2.8Ω | 5.1Ω |
| Inductance/phase 相电感 | 2.8mH | 1.5mH |
| Holding torque 静止扭矩 | 0.003N.M | 0.0036N.M |
| Rotor inertia 转子惯量 | 2.4g.cm ² | 2.6g.cm ² |
| Motor weight 马达重量 | 60g | 80g |
| Operating temperature 适用温度范围 | -10°C~50°C | |

GSSD28-Re

Shaft dia.(轴径) $\phi 5$



Housing: JST ZHR-6
Terminal: JST SZH-002T-P0.5S
Wire: AWG 28

| Pin No. | Colour 颜色 | Description 定义 |
|---------|----------------|-------------------|
| 1 | Red 红 | A+ |
| 3 | Red/White 红白 | A- |
| 4 | Green 绿 | B+ |
| 6 | Green/White 绿白 | B- |

| Model 样式 | Lead 导程 | L2 | L3 | L4 | L5 | F | Df | D | X | Dp | V |
|-------------------|------------|-------|----------|------|----|-----|----|----|-----|----|----|
| GSSD28-Re0504-PM1 | 04 | 33.35 | L1+33.35 | 11.5 | 8 | 3.5 | 23 | 10 | 2.9 | 15 | 15 |
| GSSD28-Re0504-PM2 | 04 | 45 | L1+45 | 11.5 | 8 | 3.5 | 23 | 10 | 2.9 | 15 | 15 |

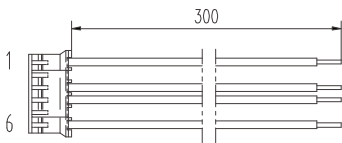
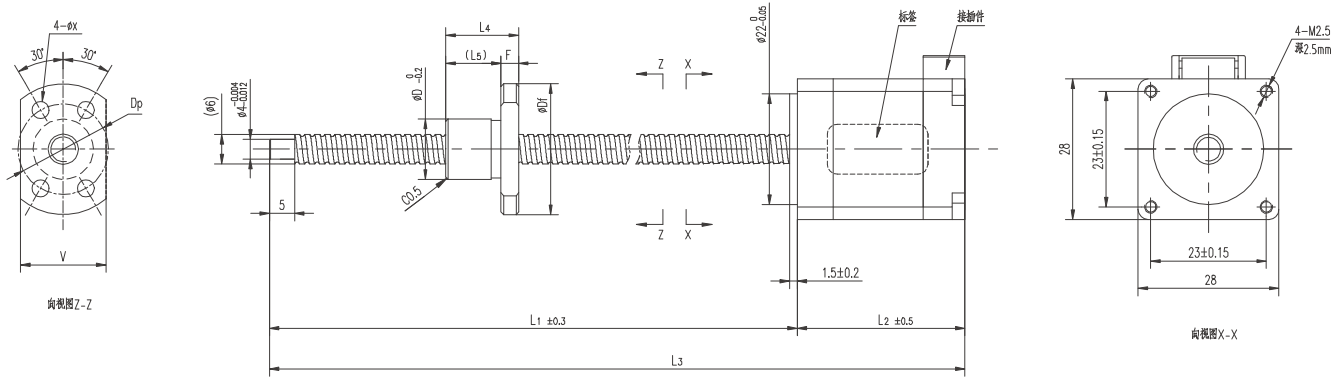
L1以下尺寸为标准品 85 / 105 / 145 / 185 / 225 / 265

| Ball Screw Specifications | | 主要技术参数 |
|---------------------------|------------|--------|
| Accuracy grade 精度等级 | Ct7 | |
| Thread direction 螺纹方向 | Right 右旋 | |
| Axial play 轴向间隙 | Max 0.07mm | |
| Repeatability 重复精度 (参考) | ±0.05mm | |

| Sliding Specifications | | 主要技术参数 | |
|------------------------------|----------------------|---------------------|--|
| Motor model 马达类型 | 11E2110 | 11E2216 | |
| Motor code 马达代号 | PM1 | PM2 | |
| Step angle 步距角 | 1.8° | | |
| Rated voltage 额定电压 | 2.1V | 2.4V | |
| Rated current 额定电流 | 1A | 1.6A | |
| Resistance/phase 相阻抗 | 2.1Ω | 1.5Ω | |
| Inductance/phase 相电感 | 1.5mH | 1.36mH | |
| Holding torque 静止扭矩 | 0.036N.M | 0.052N.M | |
| Rotor inertia 转子惯量 | 7.2g.cm ² | 12g.cm ² | |
| Motor weight 马达重量 | 180g | 200g | |
| Operating temperature 适用温度范围 | -10°C~50°C | | |

GSSD28-Re

Shaft dia.(轴径) $\phi 6$



Housing: JST ZHR-6
Terminal: JST SZH-002T-P0.5S
Wire: AWG 28

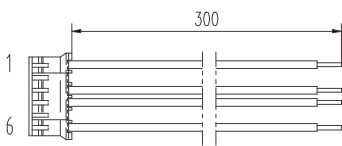
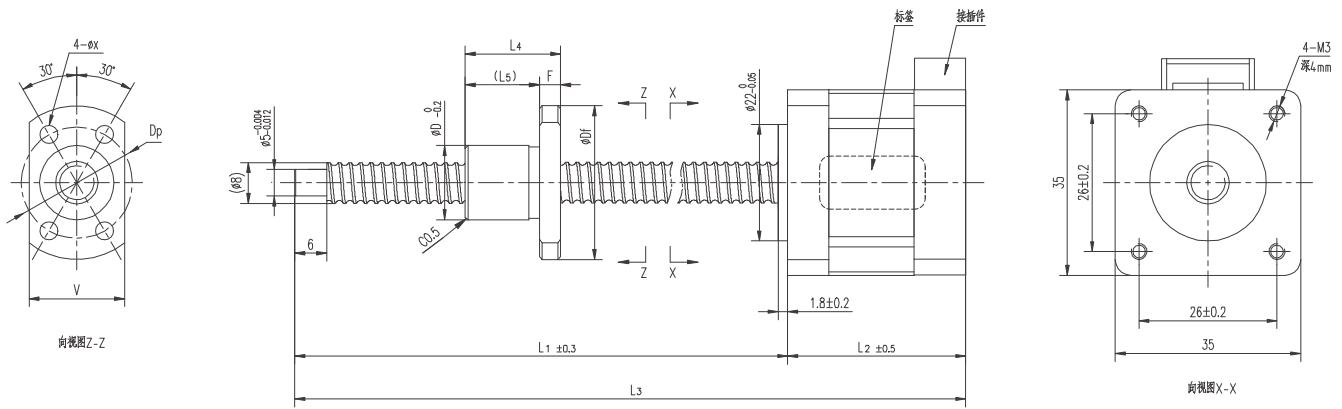
| Pin No. | Colour 颜色 | Description 定义 |
|---------|----------------|-------------------|
| 1 | Red 红 | A+ |
| 3 | Red/White 红白 | A- |
| 4 | Green 绿 | B+ |
| 6 | Green/White 绿白 | B- |

| Model 样式 | Lead 导程 | L2 | L3 | L4 | L5 | F | Df | D | X | Dp | V |
|-------------------|---------|----------------------------------|----------|------|----|-----|----|----|-----|----|----|
| GSSD28-Re0601-PM1 | 01 | 33.35 | L1+33.35 | 14.5 | 11 | 3.5 | 26 | 12 | 3.4 | 18 | 17 |
| GSSD28-Re0601-PM2 | 01 | 45 | L1+45 | 14.5 | 11 | 3.5 | 26 | 12 | 3.4 | 18 | 17 |
| GSSD28-Re0602-PM1 | 02 | 33.35 | L1+33.35 | 14.5 | 11 | 3.5 | 26 | 12 | 3.4 | 18 | 17 |
| GSSD28-Re0602-PM2 | 02 | 45 | L1+45 | 14.5 | 11 | 3.5 | 26 | 12 | 3.4 | 18 | 17 |
| GSSD28-Re0606-PM1 | 06 | 33.35 | L1+33.35 | 14.5 | 11 | 3.5 | 26 | 12 | 3.4 | 18 | 17 |
| GSSD28-Re0606-PM2 | 06 | 45 | L1+45 | 14.5 | 11 | 3.5 | 26 | 12 | 3.4 | 18 | 17 |
| GSSD28-Re0610-PM1 | 10 | 33.35 | L1+33.35 | 14.5 | 11 | 3.5 | 26 | 12 | 3.4 | 18 | 17 |
| GSSD28-Re0610-PM2 | 10 | 45 | L1+45 | 14.5 | 11 | 3.5 | 26 | 12 | 3.4 | 18 | 17 |
| GSSD28-Re0618-PM1 | 18 | 33.35 | L1+33.35 | 14.5 | 11 | 3.5 | 26 | 12 | 3.4 | 18 | 17 |
| GSSD28-Re0618-PM2 | 18 | 45 | L1+45 | 14.5 | 11 | 3.5 | 26 | 12 | 3.4 | 18 | 17 |
| L1以下尺寸为标准品 | | 85 / 105 / 145 / 185 / 225 / 265 | | | | | | | | | |

| Ball Screw Specifications 主要技术参数 | |
|----------------------------------|---------------|
| Accuracy grade 精度等级 | Ct7 |
| Thread direction 螺纹方向 | Right 右旋 |
| Axial play 轴向间隙 | Max 0.07mm |
| Repeatability 重复精度 (参考) | ± 0.05 mm |

| Sliding Specifications 主要技术参数 | | |
|-------------------------------|----------------------|---------------------|
| Motor model 马达类型 | 11E2110 | 11E2216 |
| Motor code 马达代号 | PM1 | PM2 |
| Step angle 步距角 | 1.8° | |
| Rated voltage 额定电压 | 2.1V | 2.4V |
| Rated current 额定电流 | 1A | 1.6A |
| Resistance/phase 相阻抗 | 2.1 Ω | 1.5 Ω |
| Inductance/phase 相电感 | 1.5mH | 1.36mH |
| Holding torque 静止扭矩 | 0.036N.M | 0.052N.M |
| Rotor inertia 转子惯量 | 7.2g.cm ² | 12g.cm ² |
| Motor weight 马达重量 | 180g | 200g |
| Operating temperature 适用温度范围 | -10°C~50°C | |

GSSD35-Re

Shaft dia.(轴径) $\phi 8$ 

Housing: JST PHR-6
Terminal: JST SPH-002T-P0.5S
Wire: AWG 26

| Pin No. | Colour 颜色 | Description 定义 |
|---------|--------------|-------------------|
| 1 | Black 黑 | A+ |
| 3 | Green 绿 | A- |
| 4 | Red 红 | B+ |
| 6 | Blue 蓝 | B- |

| Ball Screw Specifications | | 主要技术参数 |
|---------------------------|--|------------|
| Accuracy grade 精度等级 | | Ct7 |
| Thread direction 螺纹方向 | | Right 右旋 |
| Axial play 轴向间隙 | | Max 0.07mm |
| Repeatability 重复精度 | | ±0.05mm |

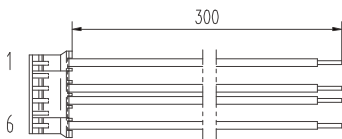
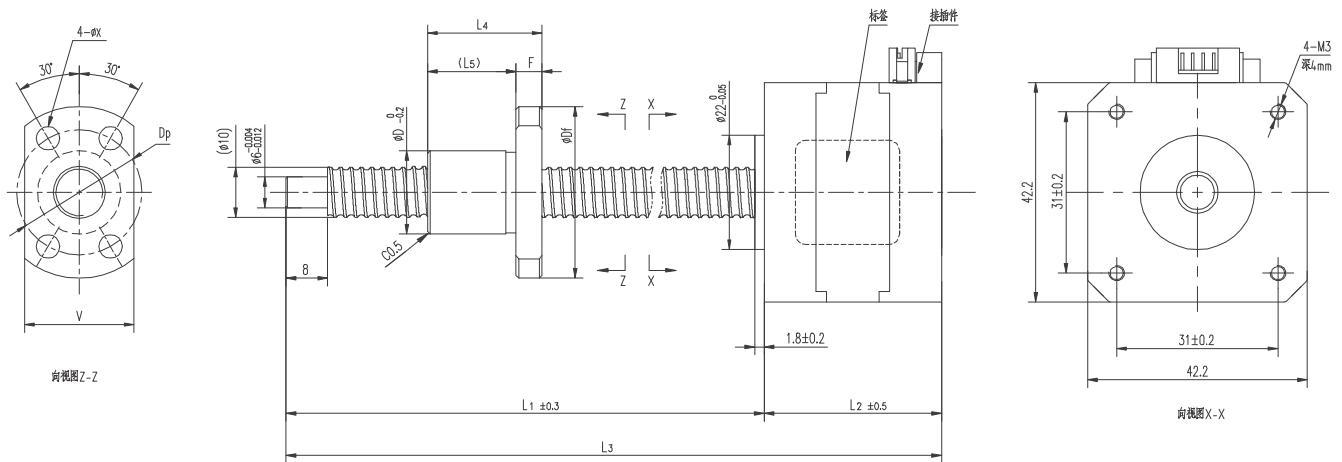
| Model 样式 | Lead 导程 | L2 | L3 | L4 | L5 | F | Df | D | X | Dp | V |
|-------------------|------------|------|---------|----|----|---|----|----|-----|----|----|
| GSSD35-Re0801-PM1 | 01 | 33.6 | L1+33.6 | 18 | 14 | 4 | 29 | 14 | 3.4 | 21 | 18 |
| GSSD35-Re0801-PM2 | 01 | 45.6 | L1+45.6 | 18 | 14 | 4 | 29 | 14 | 3.4 | 21 | 18 |
| GSSD35-Re0802-PM1 | 02 | 33.6 | L1+33.6 | 18 | 14 | 4 | 29 | 14 | 3.4 | 21 | 18 |
| GSSD35-Re0802-PM2 | 02 | 45.6 | L1+45.6 | 18 | 14 | 4 | 29 | 14 | 3.4 | 21 | 18 |
| GSSD35-Re0803-PM1 | 03 | 33.6 | L1+33.6 | 18 | 14 | 4 | 29 | 14 | 3.4 | 21 | 18 |
| GSSD35-Re0803-PM2 | 03 | 45.6 | L1+45.6 | 18 | 14 | 4 | 29 | 14 | 3.4 | 21 | 18 |
| GSSD35-Re0805-PM1 | 05 | 33.6 | L1+33.6 | 18 | 14 | 4 | 29 | 14 | 3.4 | 21 | 18 |
| GSSD35-Re0805-PM2 | 05 | 45.6 | L1+45.6 | 18 | 14 | 4 | 29 | 14 | 3.4 | 21 | 18 |
| GSSD35-Re0808-PM1 | 08 | 33.6 | L1+33.6 | 18 | 14 | 4 | 29 | 14 | 3.4 | 21 | 18 |
| GSSD35-Re0808-PM2 | 08 | 45.6 | L1+45.6 | 18 | 14 | 4 | 29 | 14 | 3.4 | 21 | 18 |
| GSSD35-Re0810-PM1 | 10 | 33.6 | L1+33.6 | 18 | 14 | 4 | 29 | 14 | 3.4 | 21 | 18 |
| GSSD35-Re0810-PM2 | 10 | 45.6 | L1+45.6 | 18 | 14 | 4 | 29 | 14 | 3.4 | 21 | 18 |
| GSSD35-Re0812-PM1 | 12 | 33.6 | L1+33.6 | 18 | 14 | 4 | 29 | 14 | 3.4 | 21 | 18 |
| GSSD35-Re0812-PM2 | 12 | 45.6 | L1+45.6 | 18 | 14 | 4 | 29 | 14 | 3.4 | 21 | 18 |
| GSSD35-Re0818-PM1 | 18 | 33.6 | L1+33.6 | 18 | 14 | 4 | 29 | 14 | 3.4 | 21 | 18 |
| GSSD35-Re0818-PM2 | 18 | 45.6 | L1+45.6 | 18 | 14 | 4 | 29 | 14 | 3.4 | 21 | 18 |
| GSSD35-Re0824-PM1 | 24 | 33.6 | L1+33.6 | 18 | 14 | 4 | 29 | 14 | 3.4 | 21 | 18 |
| GSSD35-Re0824-PM2 | 24 | 45.6 | L1+45.6 | 18 | 14 | 4 | 29 | 14 | 3.4 | 21 | 18 |

L1以下尺寸为标准品 98 / 123 / 148 / 173 / 198 / 223 / 248 / 273 / 323 / 373

| Sliding Specifications | | | 主要技术参数 |
|------------------------------|---------------------|---------------------|--------|
| Motor model 马达类型 | 14E2110 | 14E2215 | |
| Motor code 马达代号 | PM1 | PM2 | |
| Step angle 步距角 | 1.8° | | |
| Rated voltage 额定电压 | 3.5V | 4.05V | |
| Rated current 额定电流 | 1A | 1.5A | |
| Resistance/phase 相阻抗 | 3.5Ω | 2.7Ω | |
| Inductance/phase 相电感 | 3.6mH | 3.2mH | |
| Holding torque 静止扭矩 | 0.06N.M | 0.1N.M | |
| Rotor inertia 转子惯量 | 21g.cm ² | 32g.cm ² | |
| Motor weight 马达重量 | 200g | 250g | |
| Operating temperature 适用温度范围 | -10°C~50°C | | |

GSSD42-Re

Shaft dia.(轴径) $\phi 10$



Housing: JST PHR-6
Terminal: JST SPH-002T-P0.5S
Wire: AWG 26

| Pin No. | Colour 颜色 | Description 定义 |
|---------|-----------|----------------|
| 1 | Black 黑 | A+ |
| 3 | Green 绿 | A- |
| 4 | Red 红 | B+ |
| 6 | Blue 蓝 | B- |

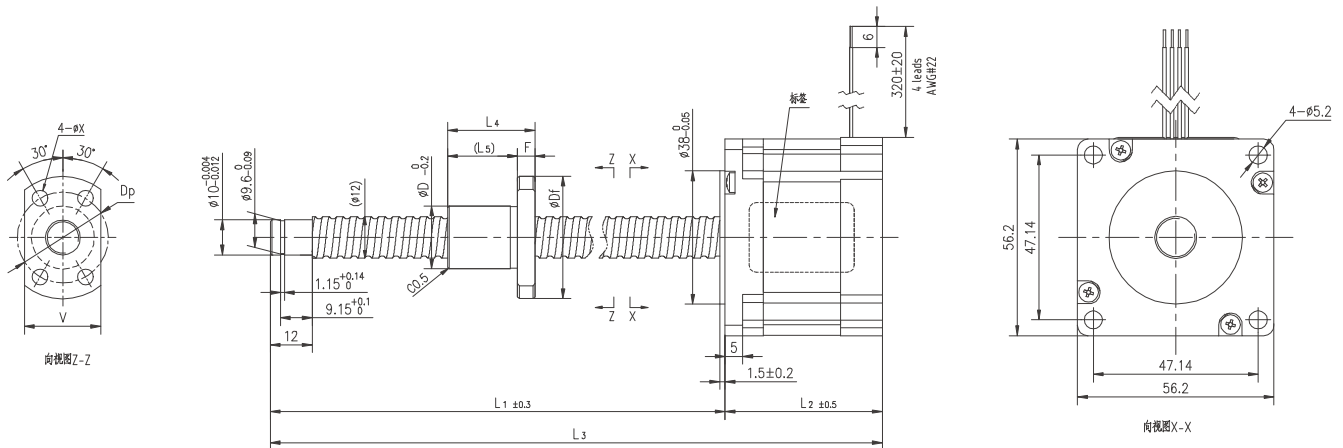
| Ball Screw Specifications 主要技术参数 | |
|----------------------------------|------------|
| Accuracy grade 精度等级 | Ct7 |
| Thread direction 螺纹方向 | Right 右旋 |
| Axial play 轴向间隙 | Max 0.07mm |
| Repeatability 重复精度 | ±0.05mm |

| Model 样式 | Lead 导程 | L2 | L3 | L4 | L5 | F | Df | D | X | Dp | V |
|-------------------|---------|------|---------|----|----|---|----|----|-----|----|----|
| GSSD42-Re1001-PM1 | 01 | 34.1 | L1+34.1 | 22 | 17 | 5 | 33 | 16 | 4.5 | 24 | 21 |
| GSSD42-Re1001-PM2 | 01 | 48.1 | L1+48.1 | 22 | 17 | 5 | 33 | 16 | 4.5 | 24 | 21 |
| GSSD42-Re1002-PM1 | 02 | 34.1 | L1+34.1 | 22 | 17 | 5 | 33 | 16 | 4.5 | 24 | 21 |
| GSSD42-Re1002-PM2 | 02 | 48.1 | L1+48.1 | 22 | 17 | 5 | 33 | 16 | 4.5 | 24 | 21 |
| GSSD42-Re1004-PM1 | 04 | 34.1 | L1+34.1 | 22 | 17 | 5 | 33 | 16 | 4.5 | 24 | 21 |
| GSSD42-Re1004-PM2 | 04 | 48.1 | L1+48.1 | 22 | 17 | 5 | 33 | 16 | 4.5 | 24 | 21 |
| GSSD42-Re1005-PM1 | 05 | 34.1 | L1+34.1 | 22 | 17 | 5 | 33 | 16 | 4.5 | 24 | 21 |
| GSSD42-Re1005-PM2 | 05 | 48.1 | L1+48.1 | 22 | 17 | 5 | 33 | 16 | 4.5 | 24 | 21 |
| GSSD42-Re1010-PM1 | 10 | 34.1 | L1+34.1 | 22 | 17 | 5 | 33 | 16 | 4.5 | 24 | 21 |
| GSSD42-Re1010-PM2 | 10 | 48.1 | L1+48.1 | 22 | 17 | 5 | 33 | 16 | 4.5 | 24 | 21 |
| GSSD42-Re1015-PM1 | 15 | 34.1 | L1+34.1 | 22 | 17 | 5 | 33 | 16 | 4.5 | 24 | 21 |
| GSSD42-Re1015-PM2 | 15 | 48.1 | L1+48.1 | 22 | 17 | 5 | 33 | 16 | 4.5 | 24 | 21 |
| GSSD42-Re1020-PM1 | 20 | 34.1 | L1+34.1 | 22 | 17 | 5 | 33 | 16 | 4.5 | 24 | 21 |
| GSSD42-Re1020-PM2 | 20 | 48.1 | L1+48.1 | 22 | 17 | 5 | 33 | 16 | 4.5 | 24 | 21 |
| GSSD42-Re1030-PM1 | 30 | 34.1 | L1+34.1 | 22 | 17 | 5 | 33 | 16 | 4.5 | 24 | 21 |
| GSSD42-Re1030-PM2 | 30 | 48.1 | L1+48.1 | 22 | 17 | 5 | 33 | 16 | 4.5 | 24 | 21 |

L1以下尺寸为标准品 152 / 202 / 252 / 202 / 352

| Sliding Specifications 主要技术参数 | | |
|-------------------------------|---------------------|---------------------|
| Motor model 马达类型 | 17E2115 | 17E3225 |
| Motor code 马达代号 | PM1 | PM2 |
| Step angle 步距角 | 1.8° | |
| Rated voltage 额定电压 | 2.8V | 2.25V |
| Rated current 额定电流 | 1.5A | 2.5A |
| Resistance/phase 相阻抗 | 1.85Ω | 0.9Ω |
| Inductance/phase 相电感 | 2.2mH | 1.8mH |
| Holding torque 静止扭矩 | 0.18N.M | 0.32N.M |
| Rotor inertia 转子惯量 | 36g.cm ² | 58g.cm ² |
| Motor weight 马达重量 | 280g | 380g |
| Operating temperature 适用温度范围 | -10°C~50°C | |

GSSD57-Re

Shaft dia.(轴径) $\phi 12$ 

| Model 样式 | Lead 导程 | L2 | L3 | L4 | L5 | F | Df | D | X | Dp | V |
|-------------------|---------|----|-------|----|----|---|----|----|-----|----|----|
| GSSD57-Re1202-PM1 | 02 | 45 | L1+45 | 25 | 20 | 5 | 35 | 18 | 4.5 | 26 | 22 |
| GSSD57-Re1202-PM2 | 02 | 65 | L1+65 | 25 | 20 | 5 | 35 | 18 | 4.5 | 26 | 22 |
| GSSD57-Re1204-PM1 | 04 | 45 | L1+45 | 25 | 20 | 5 | 35 | 18 | 4.5 | 26 | 22 |
| GSSD57-Re1204-PM2 | 04 | 65 | L1+65 | 25 | 20 | 5 | 35 | 18 | 4.5 | 26 | 22 |
| GSSD57-Re1205-PM1 | 05 | 45 | L1+45 | 25 | 20 | 5 | 35 | 18 | 4.5 | 26 | 22 |
| GSSD57-Re1205-PM2 | 05 | 65 | L1+65 | 25 | 20 | 5 | 35 | 18 | 4.5 | 26 | 22 |
| GSSD57-Re1210-PM1 | 10 | 45 | L1+45 | 25 | 20 | 5 | 35 | 18 | 4.5 | 26 | 22 |
| GSSD57-Re1210-PM2 | 10 | 65 | L1+65 | 25 | 20 | 5 | 35 | 18 | 4.5 | 26 | 22 |
| GSSD57-Re1220-PM1 | 20 | 45 | L1+45 | 25 | 20 | 5 | 35 | 18 | 4.5 | 26 | 22 |
| GSSD57-Re1220-PM2 | 20 | 65 | L1+65 | 25 | 20 | 5 | 35 | 18 | 4.5 | 26 | 22 |
| GSSD57-Re1230-PM1 | 30 | 45 | L1+45 | 25 | 20 | 5 | 35 | 18 | 4.5 | 26 | 22 |
| GSSD57-Re1230-PM2 | 30 | 65 | L1+65 | 25 | 20 | 5 | 35 | 18 | 4.5 | 26 | 22 |
| GSSD57-Re1236-PM1 | 36 | 45 | L1+45 | 25 | 20 | 5 | 35 | 18 | 4.5 | 26 | 22 |
| GSSD57-Re1236-PM2 | 36 | 65 | L1+65 | 25 | 20 | 5 | 35 | 18 | 4.5 | 26 | 22 |

| Pin No. | Colour 颜色 | Description 定义 |
|---------|----------------|----------------|
| 1 | Red 红 | A+ |
| 3 | Red/White 红白 | A- |
| 4 | Green 绿 | B+ |
| 6 | Green/White 绿白 | B- |

| Ball Screw Specifications 主要技术参数 | |
|----------------------------------|------------|
| Accuracy grade 精度等级 | Ct7 |
| Thread direction 螺纹方向 | Right 右旋 |
| Axial play 轴向间隙 | Max 0.07mm |
| Repeatability 重复精度 (参考) | ±0.05mm |

| Sliding Specifications 主要技术参数 | | |
|-------------------------------|----------------------|----------------------|
| Motor model 马达类型 | 23E2110 | 23E2225 |
| Motor code 马达代号 | PM1 | PM2 |
| Step angle 步距角 | 1.8° | |
| Rated voltage 额定电压 | 6.4V | 5.0V |
| Rated current 额定电流 | 1.0A | 2.5A |
| Resistance/phase 相阻抗 | 6.4Ω | 2.0Ω |
| Inductance/phase 相电感 | 1.65mH | 5.2mH |
| Holding torque 静止扭矩 | 0.7N.M | 1.5N.M |
| Rotor inertia 转子惯量 | 147g.cm ² | 281g.cm ² |
| Motor weight 马达重量 | 585g | 880g |
| Operating temperature 适用温度范围 | -10°C~50°C | |

贯通轴式丝杆步进电机

Through shaft type screw stepper motor



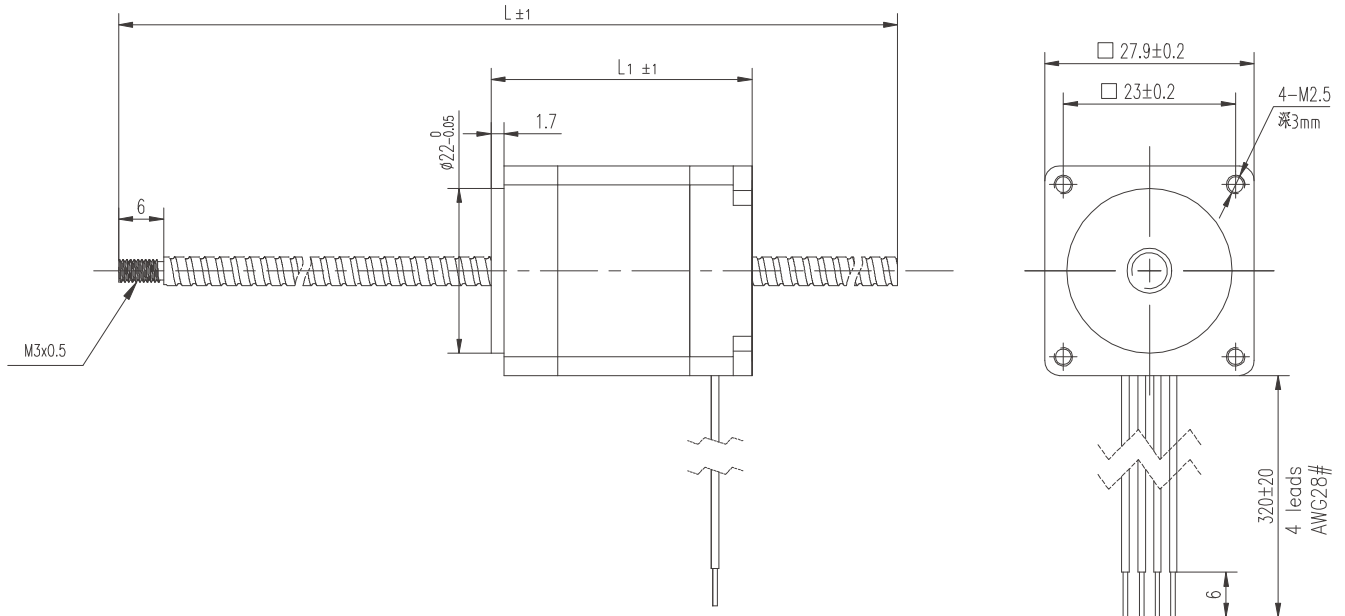
马达丝杆贯穿式代号说明

$\frac{\text{SLH}}{1} - \frac{28}{2} - \frac{\text{RE}}{3} - \frac{04}{4} - \frac{01}{5} - \frac{100\text{L}}{6} - \frac{\text{N}}{7} - \frac{\text{M1}}{8} - \frac{\text{E}}{9} - \frac{10}{10} - \frac{001}{11}$

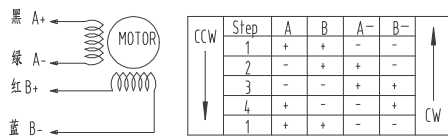
| | |
|--|--|
| 1 马达丝杆贯穿式代号 | 1 code name for threaded motor |
| 2 电机框号可选28/35/42/57 | 2 motor frame number optional 28/35/42/57 |
| 3 丝杆类型型号RE | 3 screw rod type type RE |
| 4 表示丝杆公称直径 | 4 represents the nominal diameter of the screw rod |
| 5 表示丝杆导程 | 5 represents the lead screw |
| 6 丝杆总长度 | 6 total length of lead screw |
| 7 电机出线方式 | 7 motor outlet mode |
| N：直接出线（只有直接出线） | N：straight out (only straight out) |
| 8 马达类型 | 8 motor type |
| M1：单叠 M2：双叠 | M1: single stack M2: double stack |
| 9 E代表编码器， 若无编码则不标 | 9 E is for encoder if not coded, not marked |
| 10 对应电机电流(1A=10) 对应电机电流(1.5A=15) 对应电机电流(3A=30) | 10 corresponding motor current (1A= 10) corresponding motor current (1.5A = 15) corresponding motor current (3A= 30) |
| 11 图纸说明- 客户特殊样式 | 11 drawing description-customer specific style |

SLH28-Re

Shaft dia.(轴径) $\phi 4$



接线图

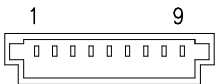
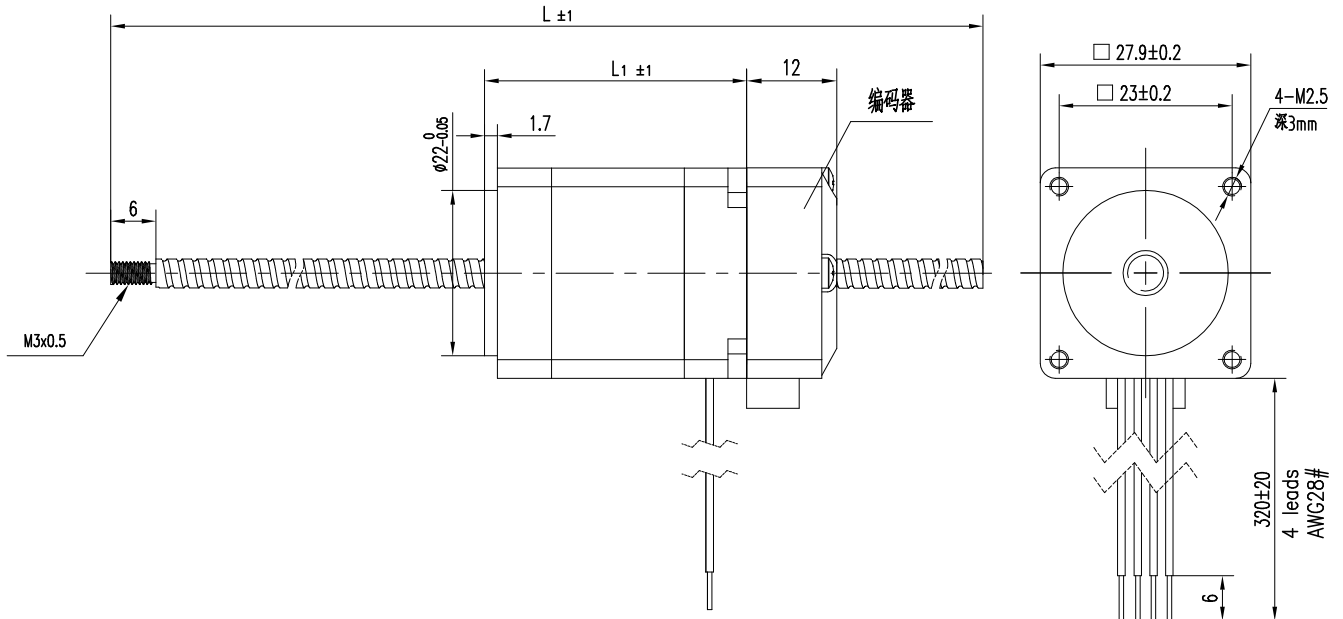


| Model 样式 | Lead 导程 | L1 |
|---------------------|---------|------|
| SLH28-Re0401-NM1-10 | 01 | 31.8 |
| SLH28-Re0401-NM2-15 | 01 | 44.7 |
| SLH28-Re0402-NM1-10 | 02 | 31.8 |
| SLH28-Re0402-NM2-15 | 02 | 44.7 |

| Sliding Specifications 主要技术参数 | |
|-------------------------------|---|
| Motor model 马达类型 | 28E32 28H45 |
| Motor code 马达代号 | NM1 NM2 |
| Step angel 步距角 | 1.8° |
| Rated voltage 额定电压 | 3.1V 3.12V |
| Rated current 额定电流 | 1A 1.5A |
| Resistance/phase 相阻抗 | 3.1Ω 2.08Ω |
| Inductance/phase 相电感 | 2.75mH 2.1mH |
| Max torque 最大力矩 | 0.08N.M 0.12N.M |
| Rotor inertia 转子惯量 | ≈4.8g.cm ² ≈5.9g.cm ² |
| Operating temperature 适用温度范围 | -10°C~50°C |

| Ball Screw Specifications 主要技术参数 | |
|----------------------------------|-------------------|
| Accuracy grade 精度等级 | Ct7 |
| Thread direction 螺纹方向 | Right 右旋 |
| Axial play 轴向间隙 | Max 0.07mm |
| Anti-rust treatment 防锈处理 | Anti-rust oil 防锈油 |
| Repeatability 重复精度 (参考) | ±0.05mm |

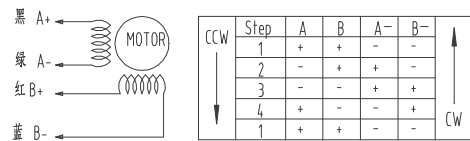
SLH28-Re-E

Shaft dia.(轴径) $\phi 4$ 

Housing: JST SHR-09V-S
Terminal: JST SSH-003T-P0.2-H
Wire: AWG 28

| Pin No. | 1 | 2 | 3 | 4 | 5 | 6 | 7 | 8 | 9 |
|----------------|-----|-----|-----|-----|----|----|----|-----|-----|
| Description 定义 | +5V | GND | EA+ | EA- | Z+ | Z- | PE | EB+ | EB- |

接线图

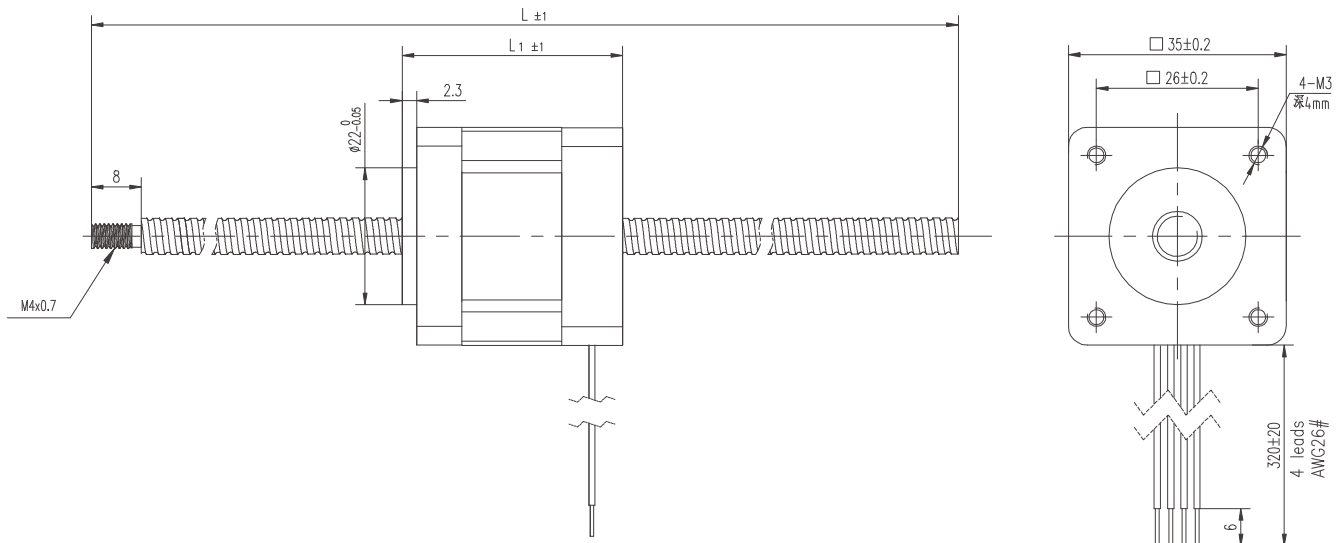


| Model 样式 | Lead 导程 | L1 |
|---------------------|---------|------|
| SLH28-Re0401-NM1-10 | 01 | 31.8 |
| SLH28-Re0401-NM2-15 | 01 | 44.7 |
| SLH28-Re0402-NM1-10 | 02 | 31.8 |
| SLH28-Re0402-NM2-15 | 02 | 44.7 |

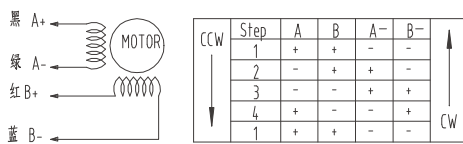
| Ball Screw Specifications 主要技术参数 | |
|----------------------------------|-------------------|
| Accuracy grade 精度等级 | Ct7 |
| Thread direction 螺纹方向 | Right 右旋 |
| Axial play 轴向间隙 | Max 0.07mm |
| Anti-rust treatment 防锈处理 | Anti-rust oil 防锈油 |
| Repeatability 重复精度 (参考) | ±0.05mm |

| Sliding Specifications 主要技术参数 | |
|-------------------------------|---|
| Motor model 马达类型 | 28E32 28H45 |
| Motor code 马达代号 | NM1 NM2 |
| Step angle 步距角 | 1.8° |
| Rated voltage 额定电压 | 3.1V 3.12V |
| Rated current 额定电流 | 1A 1.5A |
| Resistance/phase 相阻抗 | 3.1Ω 2.08Ω |
| Inductance/phase 相电感 | 2.75mH 2.1mH |
| Max torque 最大力矩 | 0.08N.M 0.12N.M |
| Rotor inertia 转子惯量 | ≈4.8g.cm ² ≈5.9g.cm ² |
| Encoder resolution 编码器分辨率 | 2000CPR |
| Operating temperature 适用温度范围 | -10°C~50°C |

SLH35-Re

Shaft dia.(轴径) $\phi 6$ 

接线图

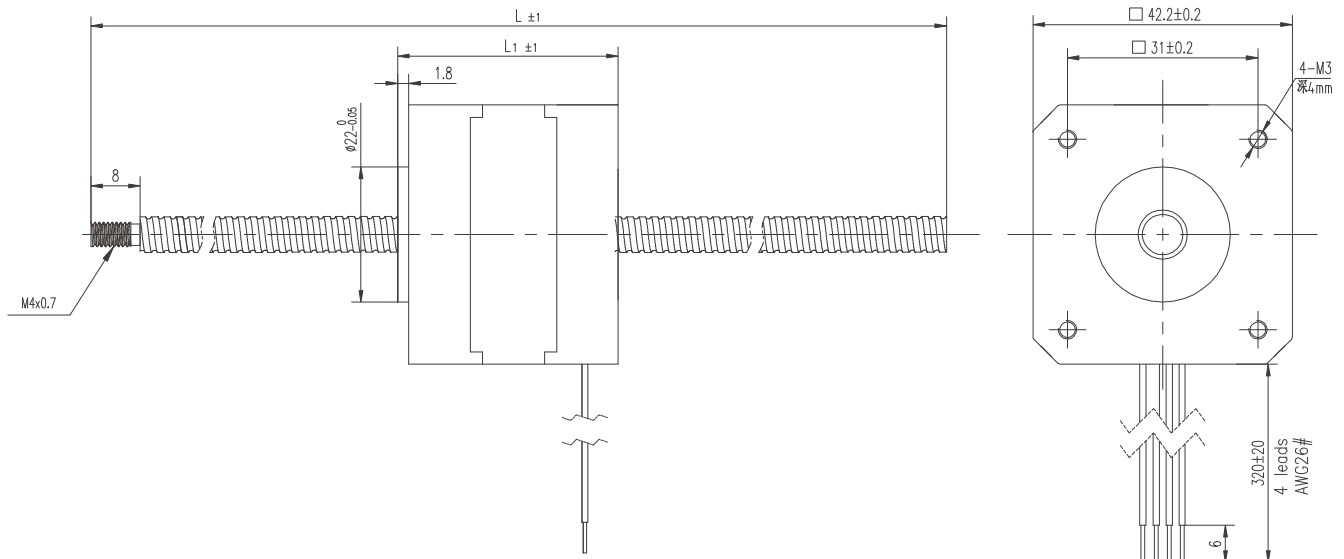


| Model 样式 | Lead 导程 | L1 |
|---------------------|---------|------|
| SLH35-Re0601-NM1-10 | 01 | 31.5 |
| SLH35-Re0601-NM2-15 | 01 | 45.6 |
| SLH35-Re0602-NM1-10 | 02 | 31.5 |
| SLH35-Re0602-NM2-15 | 02 | 45.6 |
| SLH35-Re0606-NM1-10 | 06 | 31.5 |
| SLH35-Re0606-NM2-15 | 03 | 45.6 |
| SLH35-Re0609-NM1-10 | 09 | 31.5 |
| SLH35-Re0609-NM2-15 | 09 | 45.6 |
| SLH35-Re0610-NM1-10 | 10 | 31.5 |
| SLH35-Re0610-NM2-15 | 10 | 45.6 |
| SLH35-Re0618-NM1-10 | 18 | 31.5 |
| SLH35-Re0618-NM2-15 | 18 | 45.6 |

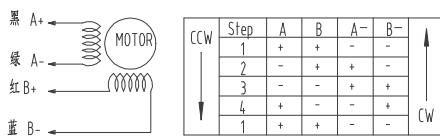
| Ball Screw Specifications | 主要技术参数 |
|---------------------------|-------------------|
| Accuracy grade 精度等级 | Ct7 |
| Thread direction 螺纹方向 | Right 右旋 |
| Axial play 轴向间隙 | Max 0.07mm |
| Anti-rust treatment 防锈处理 | Anti-rust oil 防锈油 |
| Repeatability 重复精度 | ±0.05mm |

| Sliding Specifications | 主要技术参数 | |
|------------------------------|----------------------|----------------------|
| Motor model 马达类型 | 35H32 | 35H45 |
| Motor code 马达代号 | NM1 | NM2 |
| Step angle 步距角 | 1.8° | |
| Rated voltage 额定电压 | 3.15V | 4.0V |
| Rated current 额定电流 | 1A | 1.5A |
| Resistance/phase 相阻抗 | 3.15Ω | 2.65Ω |
| Inductance/phase 相电感 | 3.65mH | 3.9mH |
| Max torque 最大力矩 | 0.13N.M | 0.24N.M |
| Rotor inertia 转子惯量 | ≈16g.cm ² | ≈17g.cm ² |
| Operating temperature 适用温度范围 | -10°C~50°C | |

SLH42-Re

Shaft dia.(轴径) $\phi 6$ 

接线图



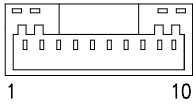
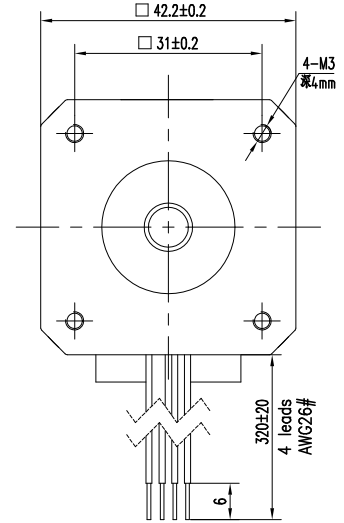
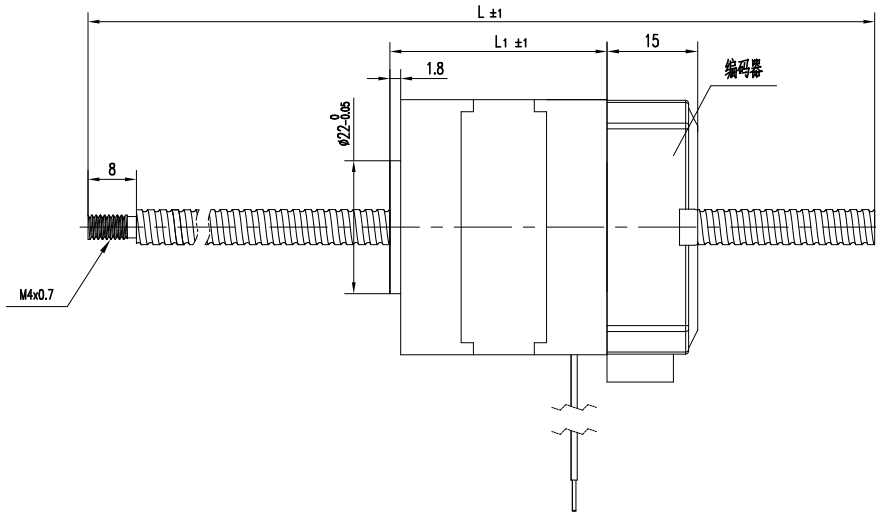
| Model 样式 | Lead 导程 | L1 |
|---------------------|---------|------|
| SLH42-Re0601-NM1-15 | 01 | 34.1 |
| SLH42-Re0601-NM2-25 | 01 | 48.1 |
| SLH42-Re0602-NM1-15 | 02 | 34.1 |
| SLH42-Re0602-NM2-25 | 02 | 48.1 |
| SLH42-Re0606-NM1-15 | 06 | 34.1 |
| SLH42-Re0606-NM2-25 | 06 | 48.1 |
| SLH42-Re0609-NM1-15 | 09 | 34.1 |
| SLH42-Re0609-NM2-25 | 09 | 48.1 |
| SLH42-Re0610-NM1-15 | 10 | 34.1 |
| SLH42-Re0610-NM2-25 | 10 | 48.1 |
| SLH42-Re0618-NM1-15 | 18 | 34.1 |
| SLH42-Re0618-NM2-25 | 18 | 48.1 |

| Ball Screw Specifications | 主要技术参数 |
|---------------------------|-------------------|
| Accuracy grade 精度等级 | Ct7 |
| Thread direction 螺纹方向 | Right 右旋 |
| Axial play 轴向间隙 | Max 0.07mm |
| Anti-rust treatment 防锈处理 | Anti-rust oil 防锈油 |
| Repeatability 重复精度 | ±0.05mm |

| Sliding Specifications | 主要技术参数 | |
|------------------------------|----------------------|----------------------|
| Motor model 马达类型 | 42H35 | 42H49 |
| Motor code 马达代号 | NM1 | NM2 |
| Step angle 步距角 | 1.8° | |
| Rated voltage 额定电压 | 2.25V | 2.0V |
| Rated current 额定电流 | 1.5A | 2.5A |
| Resistance/phase 相阻抗 | 1.5Ω | 0.8Ω |
| Inductance/phase 相电感 | 2.25mH | 1.7mH |
| Max torque 最大力矩 | 0.25N.M | 0.48N.M |
| Rotor inertia 转子惯量 | ≈24g.cm ² | ≈27g.cm ² |
| Operating temperature 适用温度范围 | -10°C~50°C | |

SLH42-Re-E

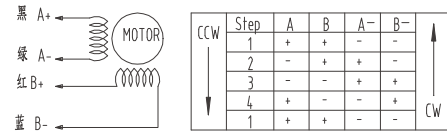
Shaft dia.(轴径) $\phi 6$



Housing: JST GHR-10V-S
Terminal: JST SSSL-002T-P0.2
Wire: AWG 26

| | | | | | | | | | | |
|----------------|----|-----|-----|-----|-----|----|----|-----|-----|----|
| Pin No. | 1 | 2 | 3 | 4 | 5 | 6 | 7 | 8 | 9 | 10 |
| Description 定义 | PE | EA- | EA+ | EB- | EB+ | Z+ | PE | GND | VCC | PE |

接线图

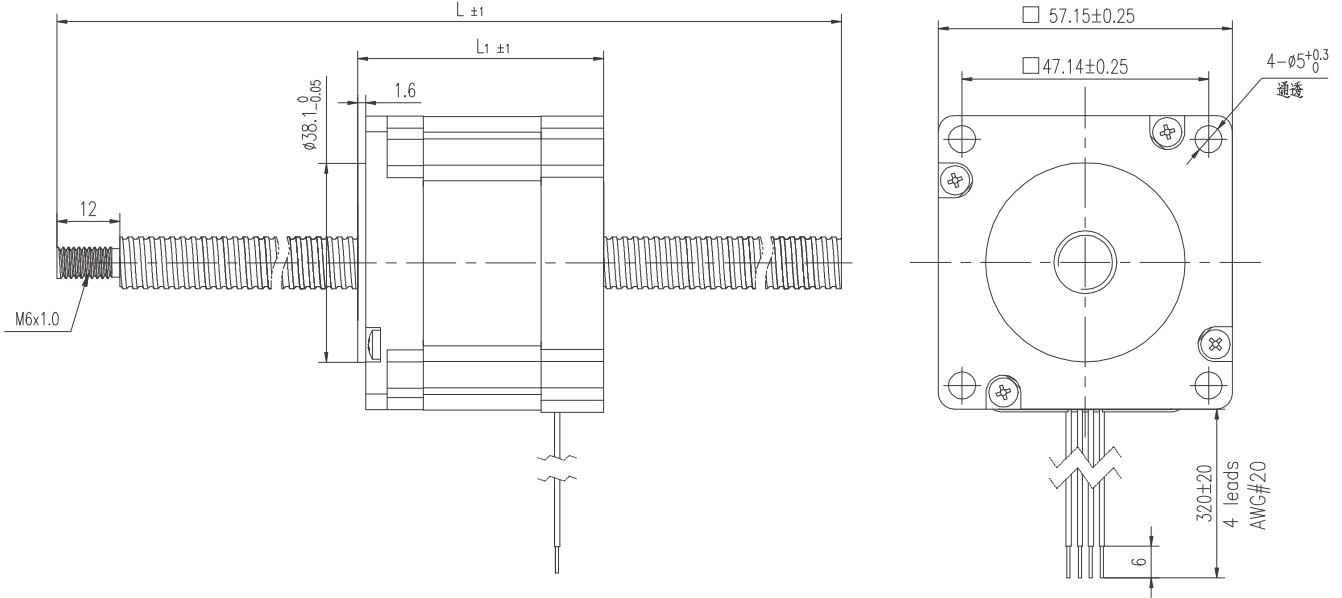


| Model 样式 | Lead 导程 | L1 |
|---------------------|---------|------|
| SLH35-Re0601-NM1-15 | 01 | 34.1 |
| SLH35-Re0601-NM2-25 | 01 | 48.1 |
| SLH35-Re0602-NM1-15 | 02 | 34.1 |
| SLH35-Re0602-NM2-25 | 02 | 48.1 |
| SLH35-Re0606-NM1-15 | 06 | 34.1 |
| SLH35-Re0606-NM2-25 | 06 | 48.1 |
| SLH35-Re0609-NM1-15 | 09 | 34.1 |
| SLH35-Re0609-NM2-25 | 09 | 48.1 |
| SLH35-Re0610-NM1-15 | 10 | 34.1 |
| SLH35-Re0610-NM2-25 | 10 | 48.1 |
| SLH35-Re0618-NM1-15 | 18 | 34.1 |
| SLH35-Re0618-NM2-25 | 18 | 48.1 |

| Sliding Specifications | 主要技术参数 | |
|------------------------------|----------------------|----------------------|
| Motor model 马达类型 | 42H35 | 42H49 |
| Motor code 马达代号 | NM1 | NM2 |
| Step angle 步距角 | 1.8° | |
| Rated voltage 额定电压 | 2.25V | 2.0V |
| Rated current 额定电流 | 1.5A | 2.5A |
| Resistance/phase 相阻抗 | 1.5Ω | 0.8Ω |
| Inductance/phase 相电感 | 2.25mH | 1.7mH |
| Max torque 最大力矩 | 0.25N.M | 0.48N.M |
| Rotor inertia 转子惯量 | ≈24g.cm ² | ≈27g.cm ² |
| Encoder resolution 编码器分辨率 | 5000CPR | |
| Operating temperature 适用温度范围 | -10°C~50°C | |

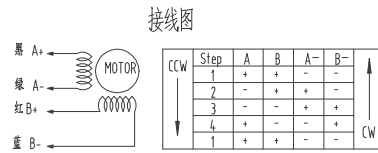
| Ball Screw Specifications | 主要技术参数 |
|---------------------------|-------------------|
| Accuracy grade 精度等级 | Ct7 |
| Thread direction 螺纹方向 | Right 右旋 |
| Axial play 轴向间隙 | Max 0.07mm |
| Anti-rust treatment 防锈处理 | Anti-rust oil 防锈油 |
| Repeatability 重复精度 | ±0.05mm |

SLH57-Re

Shaft dia.(轴径) $\phi 10$ 

| Model 样式 | Lead 导程 | L1 |
|---------------------|---------|------|
| SLH57-Re1001-NM1-30 | 01 | 45.5 |
| SLH57-Re1001-NM2-40 | 01 | 64.5 |
| SLH57-Re1002-NM1-30 | 02 | 45.5 |
| SLH57-Re1002-NM2-40 | 02 | 64.5 |
| SLH57-Re1003-NM1-30 | 03 | 45.5 |
| SLH57-Re1003-NM2-40 | 03 | 64.5 |
| SLH57-Re1004-NM1-30 | 04 | 45.5 |
| SLH57-Re1004-NM2-40 | 04 | 64.5 |
| SLH57-Re1005-NM1-30 | 05 | 45.5 |
| SLH57-Re1005-NM2-40 | 05 | 64.5 |
| SLH57-Re1006-NM1-30 | 06 | 45.5 |
| SLH57-Re1006-NM2-40 | 06 | 64.5 |
| SLH57-Re1010-NM1-30 | 10 | 45.5 |
| SLH57-Re1010-NM2-40 | 10 | 64.5 |
| SLH57-Re1015-NM1-30 | 15 | 45.5 |
| SLH57-Re1015-NM2-40 | 15 | 64.5 |
| SLH57-Re1020-NM1-30 | 20 | 45.5 |
| SLH57-Re1020-NM2-40 | 20 | 64.5 |
| SLH57-Re1030-NM1-30 | 30 | 45.5 |
| SLH57-Re1030-NM2-40 | 30 | 64.5 |

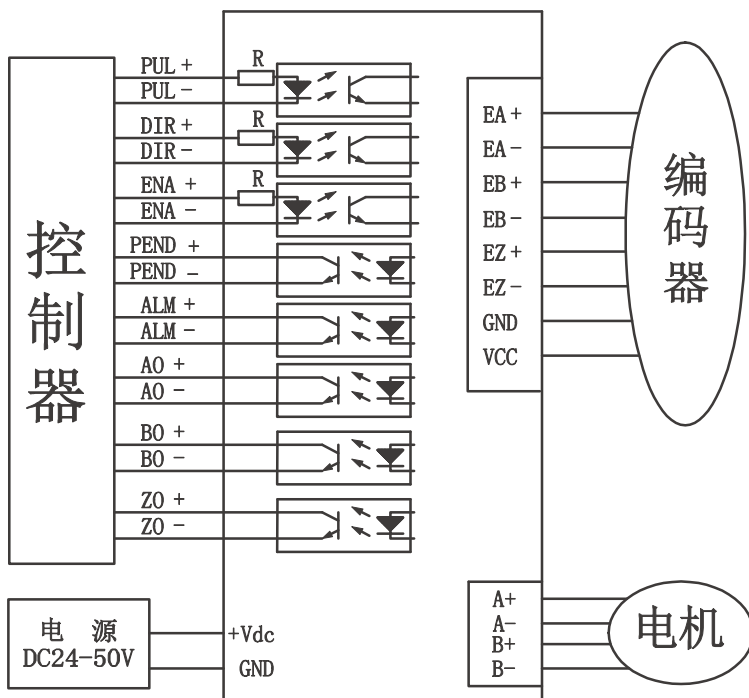
| Ball Screw Specifications | 主要技术参数 |
|---------------------------|-------------------|
| Accuracy grade 精度等级 | Ct7 |
| Thread direction 螺纹方向 | Right 右旋 |
| Axial play 轴向间隙 | Max 0.07mm |
| Anti-rust treatment 防锈处理 | Anti-rust oil 防锈油 |
| Repeatability 重复精度 | ±0.05mm |



| Sliding Specifications | 主要技术参数 | |
|------------------------------|-----------------------|-----------------------|
| Motor model 马达类型 | 57H45 | 57H65 |
| Motor code 马达代号 | NM1 | NM2 |
| Step angel 步距角 | 1.8° | |
| Rated voltage 额定电压 | 168V | 2.12V |
| Rated current 额定电流 | 3.0A | 4.0A |
| Resistance/phase 相阻抗 | 0.56Ω | 0.53Ω |
| Inductance/phase 相电感 | 1.5mH | 1.7mH |
| Max torque 最大力矩 | 1.68N.M | 1.68N.M |
| Rotor inertia 转子惯量 | ≈120g.cm ² | ≈126g.cm ² |
| Operating temperature 适用温度范围 | -10°C~50°C | |

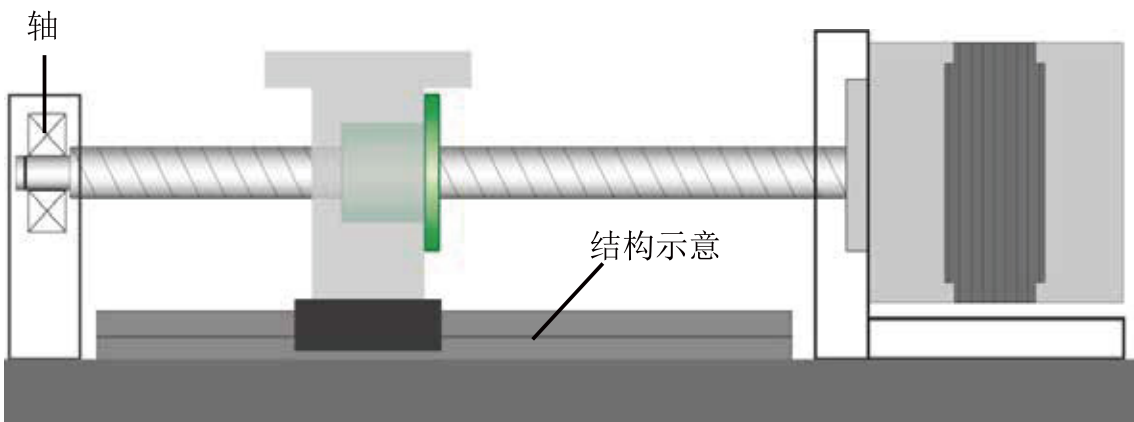
配线图

WIRING DIAGRAM



安装注意

INSTALLATION NOTES



● External执行器不是旋转停止结构。使用时需要设置外部旋转停止结构。（参照上图）轴端请务必用轴承支撑。

操作、使用注意事项

PRECAUTIONS FOR OPERATION AND USE

本产品是电机轴与丝杆轴一体型结构，因此无论是丝杆轴还是电机轴任意一方损坏，都不能维修。敬请了解。

This product is an integral structure of motor shaft and screw shaft, so no matter the screw shaft or motor shaft is damaged, it cannot be repaired. Please understand.

使用上注意

- 使用时请仔细阅读使用说明书，充分理解说明书内容，并务必严格遵守安全注意事项。
- 敲击本产品、将产品掉落或对其施加超过规定值的轴向负载、径向负载，将会导致产品损坏，请谨慎操作。
- 开封后请检查产品是否有异常，是否与所订购的产品一致。
- 若分解各部位，可能会导致异物进入及各部位组装精度降低，因此请勿分解本产品。
- 若异物进入，将会导致滚珠循环部位损坏、缩短产品寿命或导致功能失效等，因此请确实防止垃圾、切削粉末等异物的进入。
- 使用滚珠丝杆时，请务必涂抹润滑剂。在常规使用时，请每2~3个月检查一次油脂，并补充油。
使用过程中油脂变脏时，请擦去旧的油脂后涂抹新的指定油脂。
- 请勿在超过本公司规定的负载、容许转速等规格值的状态下使用。
- 加减速速率，请以20ms/kHz以上为目标进行使用。
- 请勿拉扯电机导线。另外电机导线用于固定。请勿将其用于活动用途。
- 请勿靠近磁性存储媒体。
- 负载条件及使用驱动器不同，电机转矩速率的规格值也将不同。

Attention to Use

- Please read the operation manual carefully, fully understand the contents of the manual, and strictly observe the safety precautions.
- Knock the product, drop the product or apply axial load or radial load exceeding the specified value to it, which will cause damage to the product. Please operate carefully.
- After opening, please check whether the product is abnormal and consistent with the ordered product.
- If the parts are disassembled, foreign matters may enter and the assembly accuracy of each part may be reduced. Therefore, do not disassemble this product.
- If foreign matters enter, it will damage the ball circulation part, shorten the product life or cause the function failure, etc., so please do prevent the entry of garbage, cutting powder and other foreign matters.
- When using the ball screw, be sure to apply lubricant. In normal use, please check the grease every 2-3 months and add oil.
When the grease becomes dirty during use, please wipe off the old grease and apply new specified grease.
- Do not use under the condition that the load, allowable speed and other specifications specified by the company are exceeded.
- Acceleration and deceleration rate, please use the target of more than 20ms / kHz.
- Do not pull the motor lead. In addition, the motor wire is used for fixing. Do not use it for activities.
- Keep away from magnetic storage media.
- The specification value of motor torque rate will be different with different load conditions and different drivers.

安全注意事项

- 发生异味、异常声音、冒烟、异常发热、振动等时，请立即停止运行，切断电源。
- 使用电流不能超过额定电流。
- 电机可能因负载条件及使用的驱动器而异常发热。
使用时，请将电机表面温度控制在80°C以下。
- 请确认接线方式、驱动方式以及相序。
错误接线将会导致电机异常动作。
- 请务必进行接地。
- 请勿强行弯曲、拉扯、夹住电机导线。
- 动作中请勿触摸活动部位。
- 维护检查前，请切断驱动器的输入电源。

Safety Precautions

- In case of peculiar smell, abnormal sound, smoke, abnormal heat, vibration, etc., please stop the operation immediately and cut off the power supply.
- The current used shall not exceed the rated current.
- The motor may overheat abnormally due to the load conditions and the driver used. When using, please control the motor surface temperature below 80 ° C.
- Please confirm the wiring mode, driving mode and phase sequence. Wrong wiring will lead to abnormal operation of the motor.
- Be sure to ground.
- Do not bend, pull or clamp the motor wire by force.
- Do not touch the moving parts during the action.
- Before maintenance check, please cut off the input power of the drive.

使用环境

- 请勿在环境温度超过温度0~40、环境湿度超过20~80%RH、有结露、腐蚀性气体、易燃气体的场所使用。
- 请勿在产生强电场、强磁场的场所使用。
- 请勿在有铁粉等粉体、尘埃、油污、切削液、水分、盐分、有机溶剂发生或飞散的场所使用。
- 请勿在经常发生振动的场所以及有冲击、真空等特殊环境下使用。

Use Environment

- Do not use in places where the ambient temperature exceeds 0-40, the ambient humidity exceeds 20-80% RH, condensation, corrosive gas and flammable gas are present.
- Do not use in places where strong electric and magnetic fields are generated.
- Do not use it in places where iron powder, dust, oil, cutting fluid, moisture, salt and organic solvent occur or disperse.
- Do not use it in places where vibration often occurs or in special environments such as shock and vacuum.



Overseas Sales:

Simon Wu

Whatsapp: +86 156 56775078

Shenzhen Adam Technology Co.,Ltd

Adampower UK Office:

Add: 20 Woodville Rd, Cardiff CF24 4ED, UK

Tel: +44 29 2128 6666

